

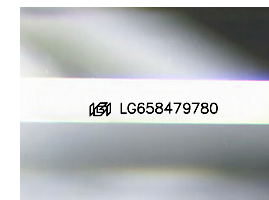


**ELECTRONIC COPY**

LG658479780  
Report verification at igi.org

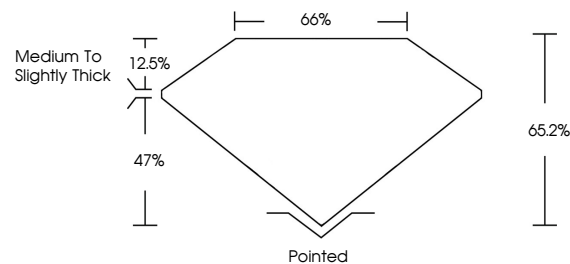


October 10, 2024  
IGI Report Number **LG658479780**  
Description **LABORATORY GROWN DIAMOND**  
Shape and Cutting Style **CUT CORNERED SQUARE  
MODIFIED BRILLIANT**  
Measurements **10.49 X 10.47 X 6.83 MM**  
**GRADING RESULTS**  
Carat Weight **6.46 CARATS**  
Color Grade **D**  
Clarity Grade **VVS 2**

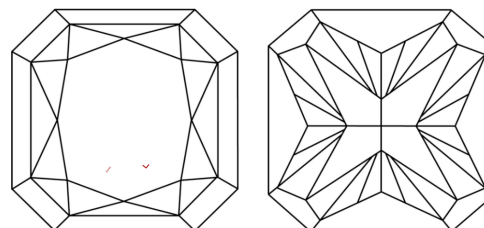


Sample Image Used

**PROPORTIONS**



**CLARITY CHARACTERISTICS**



**KEY TO SYMBOLS**

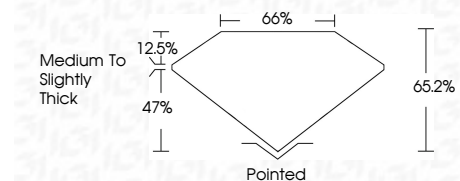
Red symbols indicate internal characteristics.  
Green symbols indicate external characteristics.

**COLOR**

D E F G H I J Faint Very Light Light

**CLARITY**

IF	VS <sup>1-2</sup>	VS <sup>1-2</sup>	SI <sup>1-2</sup>	I <sup>1-3</sup>
Internally Flawless	Very Very Slightly Included	Very Slightly Included	Slightly Included	Included



**ADDITIONAL GRADING INFORMATION**

Polish **EXCELLENT**  
Symmetry **EXCELLENT**  
Fluorescence **NONE**  
Inscription(s) **IGI LG658479780**  
Comments: This Laboratory Grown Diamond was created by Chemical Vapor Deposition (CVD) growth process.  
Type IIa



**IGI**



October 10, 2024  
IGI Report No **LG658479780**  
**CUT CORNERED SQUARE MODIFIED BRILLIANT**  
**10.49 X 10.47 X 6.83 MM**  
Carat Weight **6.46 CARATS**  
Color Grade **D**  
Clarity Grade **VVS 2**  
Depth **65.2%**  
Table **66%**  
Girdle **Medium to Slightly Thick**  
Culet **Pointed**  
Polish **EXCELLENT**  
Symmetry **EXCELLENT**  
Fluorescence **NONE**  
Inscription(s) **IGI LG658479780**  
Comments: This Laboratory Grown Diamond was created by Chemical Vapor Deposition (CVD) growth process.  
Type IIa