



ELECTRONIC COPY

LG658480319 Report verification at igi.org



October 10, 2024 IGI Report Number LG658480319 Description LABORATORY GROWN DIAMOND Shape and Cutting Style CUT CORNERED RECTANGULAR MODIFIED BRILLIANT Measurements 9.16 X 6.41 X 4.37 MM GRADING RESULTS Carat Weight 2.24 CARATS Color Grade F Clarity Grade VVS 2

October 10, 2024 IGI Report Number LG658480319 Description LABORATORY GROWN DIAMOND Shape and Cutting Style CUT CORNERED RECTANGULAR MODIFIED BRILLIANT Measurements 9.16 X 6.41 X 4.37 MM

GRADING RESULTS

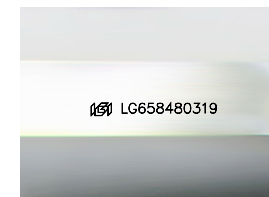
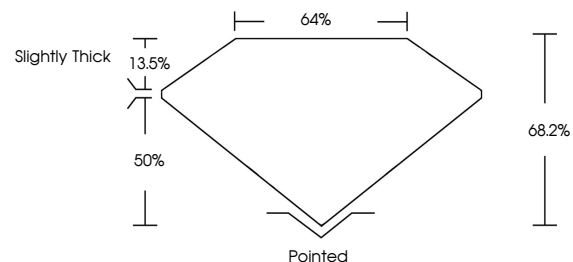
Carat Weight 2.24 CARATS Color Grade F Clarity Grade VVS 2

ADDITIONAL GRADING INFORMATION

Polish EXCELLENT Symmetry EXCELLENT Fluorescence NONE Inscription(s) LG658480319

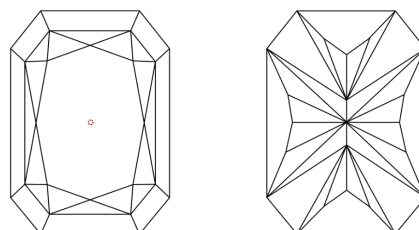
Comments: This Laboratory Grown Diamond was created by Chemical Vapor Deposition (CVD) growth process. Type IIa

PROPORTIONS



Sample Image Used

CLARITY CHARACTERISTICS



KEY TO SYMBOLS

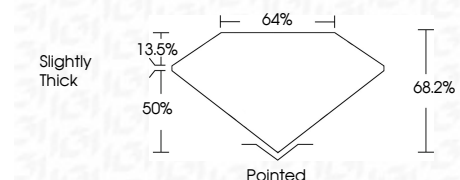
Red symbols indicate internal characteristics. Green symbols indicate external characteristics.

COLOR

D E F G H I J Faint Very Light Light

CLARITY

IF VVS 1-2 VS 1-2 SI 1-2 I 1-3 Internally Flawless Very Very Slightly Included Very Slightly Included Slightly Included Included



ADDITIONAL GRADING INFORMATION

Polish EXCELLENT Symmetry EXCELLENT Fluorescence NONE Inscription(s) LG658480319 Comments: This Laboratory Grown Diamond was created by Chemical Vapor Deposition (CVD) growth process. Type IIa



IGI



October 10, 2024 IGI Report No LG658480319 CUT CORNERED RECT. MODIFIED BRILLIANT 9.16 X 6.41 X 4.37 MM 2.24 CARATS F VVS 2 68.2% 64% Slightly Thick Pointed EXCELLENT EXCELLENT NONE NONE LG658480319

Comments: This Laboratory Grown Diamond was created by Chemical Vapor Deposition (CVD) growth process. Type IIa