



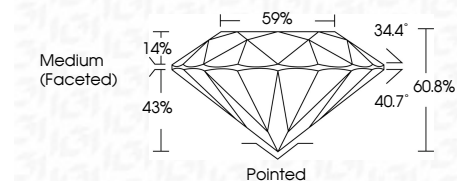
ELECTRONIC COPY

LG658483872
Report verification at igi.org



October 11, 2024
IGI Report Number LG658483872
Description LABORATORY GROWN DIAMOND
Shape and Cutting Style ROUND BRILLIANT
Measurements 6.41 - 6.44 X 3.91 MM

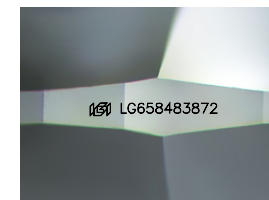
GRADING RESULTS
Carat Weight 1.00 CARAT
Color Grade E
Clarity Grade VS 1
Cut Grade IDEAL



ADDITIONAL GRADING INFORMATION
Polish EXCELLENT
Symmetry EXCELLENT
Fluorescence NONE
Inscription(s) IGI LG658483872
Comments: As Grown - No indication of post-growth treatment.
This Laboratory Grown Diamond was created by High Pressure High Temperature (HPHT) growth process.
Type II

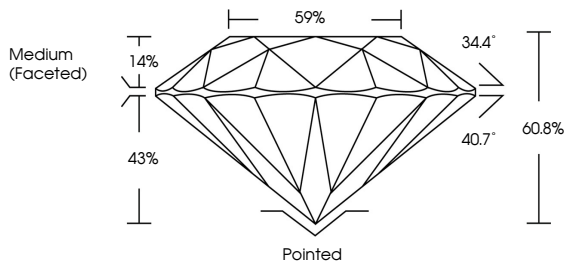


October 11, 2024
IGI Report No LG658483872
ROUND BRILLIANT
6.41 - 6.44 X 3.91 MM
1.00 CARAT E
VS 1 IDEAL
60.0% 59%
Medium (Faceted)
Pointed EXCELLENT EXCELLENT NONE
IGI LG658483872
Comments: As Grown - No indication of post-growth treatment.
This Laboratory Grown Diamond was created by High Pressure High Temperature (HPHT) growth process.
Type II

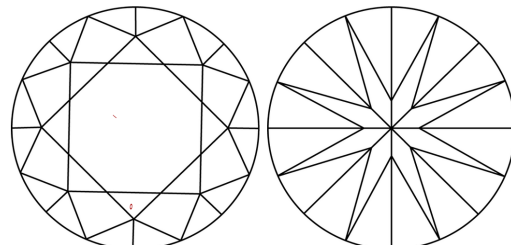


Sample Image Used

PROPORTIONS



CLARITY CHARACTERISTICS



KEY TO SYMBOLS

Red symbols indicate internal characteristics.
Green symbols indicate external characteristics.

COLOR

D E F G H I J Faint Very Light Light

CLARITY

IF VS 1-2 VS 1-2 SI 1-2 I 1-3
Internally Flawless Very Very Slightly Included Very Slightly Included Slightly Included Included

