



**ELECTRONIC COPY**

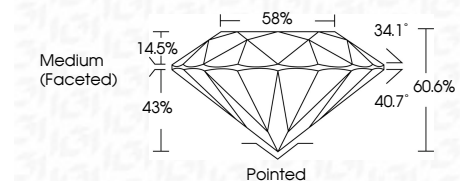
LG658491086  
Report verification at [igi.org](http://igi.org)



October 10, 2024  
IGI Report Number **LG658491086**  
Description **LABORATORY GROWN DIAMOND**  
Shape and Cutting Style **ROUND BRILLIANT**  
Measurements **6.49 - 6.54 X 3.95 MM**

**GRADING RESULTS**

Carat Weight **1.02 CARAT**  
Color Grade **D**  
Clarity Grade **VVS 2**  
Cut Grade **IDEAL**



**ADDITIONAL GRADING INFORMATION**

Polish **EXCELLENT**  
Symmetry **EXCELLENT**  
Fluorescence **NONE**  
Inscription(s) **IGI LG658491086**

Comments: HEARTS & ARROWS  
As Grown - No indication of post-growth treatment.  
This Laboratory Grown Diamond was created by High Pressure High Temperature (HPHT) growth process.  
Type II



October 10, 2024	IGI Report No LG658491086	1.02 CARAT	D	Pointed
ROUND BRILLIANT	6.49 - 6.54 X 3.95 MM	VVS 2	IDEAL	EXCELLENT
Carat Weight	Color Grade	Clarity Grade	Depth	Table
1.02 CARAT	D	VVS 2	60.6%	58%
Color Grade	Clarity Grade	Depth	Table	Girdle
D	VVS 2	60.6%	58%	Medium (Faceted)
Clarity Grade	Cut Grade	Table	Girdle	Culet
VVS 2	IDEAL	58%	Medium (Faceted)	Pointed
Depth	Cut Grade	Culet	Polish	EXCELLENT
60.6%	IDEAL	None	Symmetry	EXCELLENT
58%	None	None	Fluorescence	NONE
Medium (Faceted)	Inscriptions(s)	IGI LG658491086	Comments:	HEARTS & ARROWS
None	As Grown - No indication of post-growth treatment.	This Laboratory Grown Diamond was created by High Pressure High Temperature (HPHT) growth process.	Type II	

October 10, 2024  
IGI Report Number **LG658491086**  
Description **LABORATORY GROWN DIAMOND**  
Shape and Cutting Style **ROUND BRILLIANT**  
Measurements **6.49 - 6.54 X 3.95 MM**

**GRADING RESULTS**

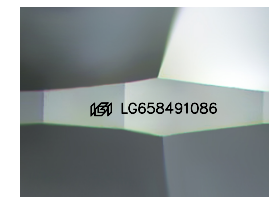
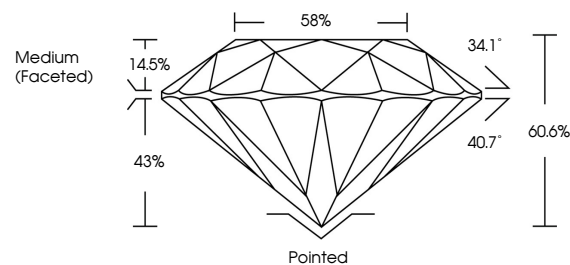
Carat Weight **1.02 CARAT**  
Color Grade **D**  
Clarity Grade **VVS 2**  
Cut Grade **IDEAL**

**ADDITIONAL GRADING INFORMATION**

Polish **EXCELLENT**  
Symmetry **EXCELLENT**  
Fluorescence **NONE**  
Inscription(s) **IGI LG658491086**

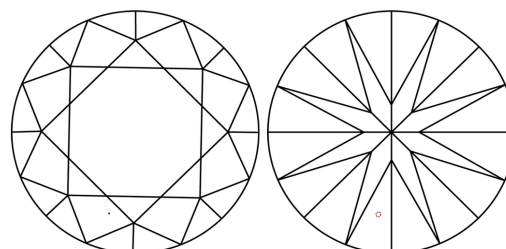
Comments: HEARTS & ARROWS  
As Grown - No indication of post-growth treatment.  
This Laboratory Grown Diamond was created by High Pressure High Temperature (HPHT) growth process.  
Type II

**PROPORTIONS**



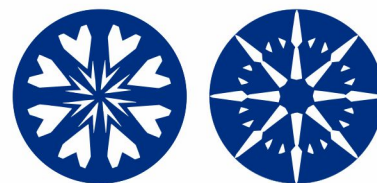
Sample Image Used

**CLARITY CHARACTERISTICS**



**KEY TO SYMBOLS**

Red symbols indicate internal characteristics.  
Green symbols indicate external characteristics.



**COLOR**

D E F G H I J Faint Very Light Light

**CLARITY**

IF	VVS <sup>1-2</sup>	VS <sup>1-2</sup>	SI <sup>1-2</sup>	I <sup>1-3</sup>
Internally Flawless	Very Very Slightly Included	Very Slightly Included	Slightly Included	Included

