



ELECTRONIC COPY

LABORATORY GROWN DIAMOND REPORT

October 16, 2024	
IGI Report Number	LG658491809
Description	LABORATORY GROWN DIAMOND
Shape and Cutting Style	CUT CORNERED RECTANGULAR MODIFIED BRILLIANT
Measurements	9.89 X 7.18 X 4.94 MM

GRADING RESULTS

Carat Weight	3.11 CARATS
Color Grade	F
Clarity Grade	VS 2

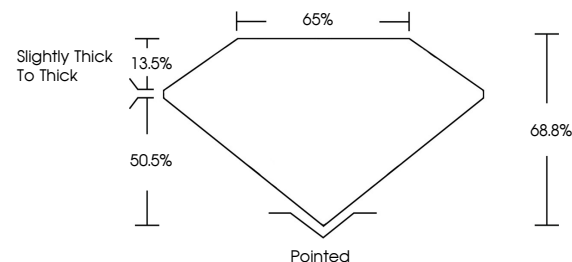
ADDITIONAL GRADING INFORMATION

Polish	EXCELLENT
Symmetry	EXCELLENT
Fluorescence	NONE
Inscription(s)	 LG658491809

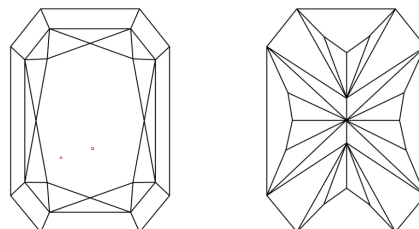
Comments: This Laboratory Grown Diamond was created by Chemical Vapor Deposition (CVD) growth process.
Type IIa

LG658491809
Report verification at lgi.org

PROPORTIONS

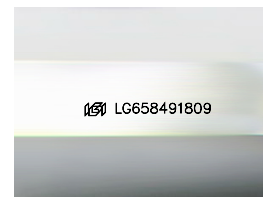


CLARITY CHARACTERISTICS



KEY TO SYMBOLS

Red symbols indicate internal characteristics.
Green symbols indicate external characteristics.



Sample Image Used

COLOR

D E F G H I J Faint Very Light Light

CLARITY

IF	VVS ¹⁻²	VS ¹⁻²	SI ¹⁻²	I ¹⁻³
Internally Flawless	Very Very Slightly Included	Very Slightly Included	Slightly Included	Included



© IGI 2020, International Gemological Institute

FD - 10 20

www.igi.org

LABORATORY GROWN DIAMOND REPORT

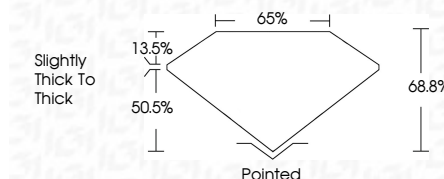


October 16, 2024	
IGI Report Number	LG658491809
Description	LABORATORY GROWN DIAMOND
Shape and Cutting Style	CUT CORNERED RECTANGULAR MODIFIED BRILLIANT

Measurements **9.89 X 7.18 X 4.94 MM**

GRADING RESULTS

Carat Weight	3.11 CARATS
Color Grade	F
Clarity Grade	VS 2



ADDITIONAL GRADING INFORMATION

Polish	EXCELLENT
Symmetry	EXCELLENT
Fluorescence	NONE
Inscription(s)	151 LG-658491805

Comments: This Laboratory Grown Diamond was created by Chemical Vapor Deposition (CVD) growth process.
Type IIa



October 16, 2024	3.11 CARATS
Lab Report No. LG569491809	F
CU REPORTED RECT. MODIFIED BRILLIANT	VS 2
8.89 X 7.18 X 4.94 MM	68.5%
	65%
	Slightly thick to thick
	Pointed
	EXCELLENT
	EXCELLENT
	NONE
	lg569491809

Comments:

The Laboratory Grown Diamond was
 analyzed by the Thermal Vapor Deposition
 (TVD) growth process.

Type IIG