



ELECTRONIC COPY

LG658494037 Report verification at igi.org



October 19, 2024 IGI Report Number LG658494037 Description LABORATORY GROWN DIAMOND Shape and Cutting Style CUT CORNERED RECTANGULAR MODIFIED BRILLIANT Measurements 7.26 X 4.85 X 3.32 MM GRADING RESULTS Carat Weight 1.02 CARAT Color Grade FANCY INTENSE YELLOW Clarity Grade VS 2

October 19, 2024 IGI Report Number LG658494037 Description LABORATORY GROWN DIAMOND Shape and Cutting Style CUT CORNERED RECTANGULAR MODIFIED BRILLIANT Measurements 7.26 X 4.85 X 3.32 MM

GRADING RESULTS

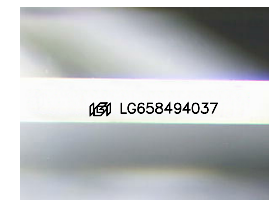
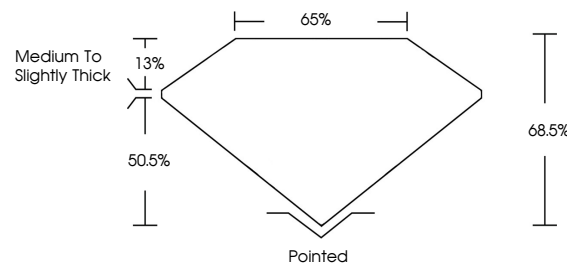
Carat Weight 1.02 CARAT Color Grade FANCY INTENSE YELLOW Clarity Grade VS 2

ADDITIONAL GRADING INFORMATION

Polish EXCELLENT Symmetry EXCELLENT Fluorescence VERY SLIGHT Inscription(s) LG658494037

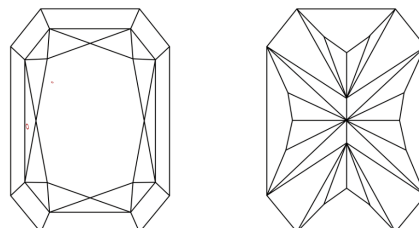
Comments: This Laboratory Grown Diamond was created by Chemical Vapor Deposition (CVD) growth process. Indications of post-growth treatment.

PROPORTIONS



Sample Image Used

CLARITY CHARACTERISTICS



KEY TO SYMBOLS

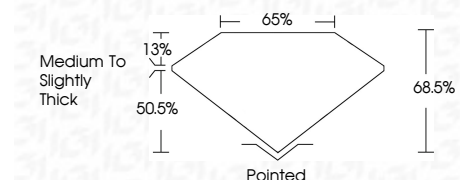
Red symbols indicate internal characteristics. Green symbols indicate external characteristics.

COLOR

D E F G H I J Faint Very Light Light

CLARITY

Table with 5 columns: IF, VS 1-2, VS 1-2, SI 1-2, I 1-3. Rows: Internally Flawless, Very Very Slightly Included, Very Slightly Included, Slightly Included, Included.



ADDITIONAL GRADING INFORMATION

Polish EXCELLENT Symmetry EXCELLENT Fluorescence VERY SLIGHT Inscription(s) LG658494037 Comments: This Laboratory Grown Diamond was created by Chemical Vapor Deposition (CVD) growth process. Indications of post-growth treatment.



October 19, 2024 IGI Report No LG658494037 CUT CORNERED RECT. MODIFIED BRILLIANT 7.26 X 4.85 X 3.32 MM 1.02 CARAT FANCY INTENSE YELLOW VS 2 68.5% 50.5% Medium to Slightly Thick Pointed EXCELLENT EXCELLENT VERY SLIGHT LG658494037 Comments: This Laboratory Grown Diamond was created by Chemical Vapor Deposition (CVD) growth process. Indications of post-growth treatment.