



ELECTRONIC COPY

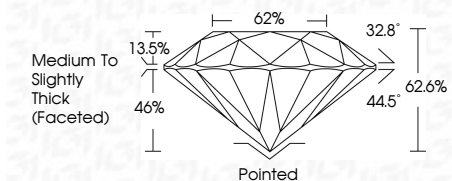
LG658494231
Report verification at igi.org



October 9, 2024
IGI Report Number LG658494231
Description LABORATORY GROWN DIAMOND
Shape and Cutting Style ROUND MIXED CUT
Measurements 7.89 - 7.89 X 4.94 MM

GRADING RESULTS

Carat Weight 1.96 CARAT
Color Grade D
Clarity Grade VS 1

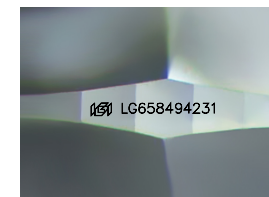


ADDITIONAL GRADING INFORMATION

Polish EXCELLENT
Symmetry EXCELLENT
Fluorescence NONE
Inscription(s) IGI LG658494231
Comments: This Laboratory Grown Diamond was created by Chemical Vapor Deposition (CVD) growth process. Type IIa

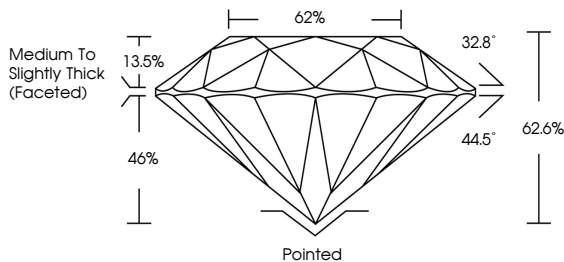


October 9, 2024
IGI Report No LG658494231
ROUND MIXED CUT
1.96 CARAT
D
VS 1
7.89 - 7.89 X 4.94 MM
Color Grade D
Clarity Grade VS 1
Depth 62.6%
Table 62%
Girdle Medium to Slightly Thick (Faceted)
Culet Pointed
Polish EXCELLENT
Symmetry EXCELLENT
Fluorescence NONE
Inscription(s) IGI LG658494231
Comments: This Laboratory Grown Diamond was created by Chemical Vapor Deposition (CVD) growth process. Type IIa

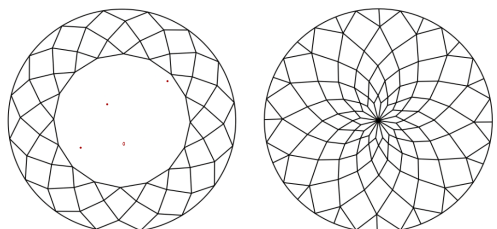


Sample Image Used

PROPORTIONS



CLARITY CHARACTERISTICS



KEY TO SYMBOLS

Red symbols indicate internal characteristics.
Green symbols indicate external characteristics.

COLOR

Color scale table with categories: D, E, F, G, H, I, J, Faint, Very Light, Light

CLARITY

Clarity scale table with categories: IF, VVS 1-2, VS 1-2, SI 1-2, I 1-3, Internally Flawless, Very Very Slightly Included, Very Slightly Included, Slightly Included, Included

