



ELECTRONIC COPY

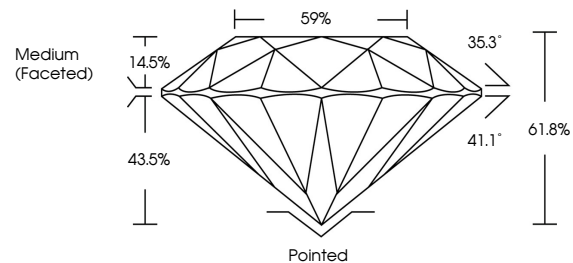
LG658494759
Report verification at igi.org



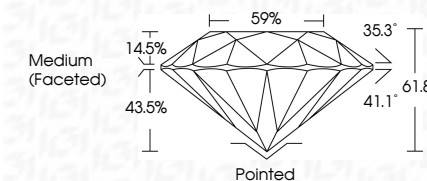
October 11, 2024
IGI Report Number LG658494759
Description LABORATORY GROWN DIAMOND
Shape and Cutting Style ROUND BRILLIANT
Measurements 8.04 - 8.09 X 4.99 MM
GRADING RESULTS
Carat Weight 2.01 CARATS
Color Grade E
Clarity Grade VS 2
Cut Grade IDEAL

October 11, 2024
IGI Report Number LG658494759
Description LABORATORY GROWN DIAMOND
Shape and Cutting Style ROUND BRILLIANT
Measurements 8.04 - 8.09 X 4.99 MM
GRADING RESULTS
Carat Weight 2.01 CARATS
Color Grade E
Clarity Grade VS 2
Cut Grade IDEAL

PROPORTIONS



Sample Image Used



ADDITIONAL GRADING INFORMATION

Polish EXCELLENT
Symmetry EXCELLENT
Fluorescence NONE
Inscription(s) IGI LG658494759

Comments: This Laboratory Grown Diamond was created by Chemical Vapor Deposition (CVD) growth process. Type IIa

ADDITIONAL GRADING INFORMATION

Polish EXCELLENT
Symmetry EXCELLENT
Fluorescence NONE
Inscription(s) IGI LG658494759
Comments: This Laboratory Grown Diamond was created by Chemical Vapor Deposition (CVD) growth process. Type IIa

COLOR

D E F G H I J Faint Very Light Light

CLARITY

IF VS 1-2 VS 1-2 SI 1-2 I 1-3
Internally Flawless Very Very Slightly Included Very Slightly Included Slightly Included Included



IGI

October 11, 2024
IGI Report No LG658494759
ROUND BRILLIANT
8.04 - 8.09 X 4.99 MM
2.01 CARATS
E
VS 2
IDEAL
61.8%
59%
Medium (Faceted)
Pointed
EXCELLENT
EXCELLENT
NONE
IGI LG658494759
Comments: This Laboratory Grown Diamond was created by Chemical Vapor Deposition (CVD) growth process. Type IIa