



ELECTRONIC COPY

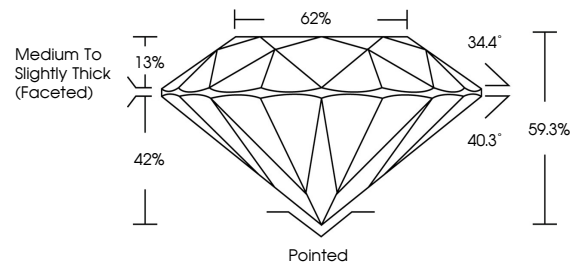
LG658494886
Report verification at igi.org



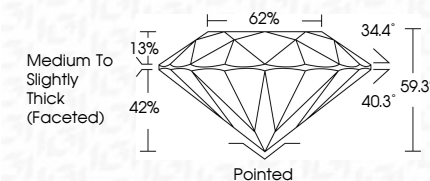
October 12, 2024
IGI Report Number **LG658494886**
Description **LABORATORY GROWN DIAMOND**
Shape and Cutting Style **ROUND BRILLIANT**
Measurements **10.20 - 10.26 X 6.07 MM**
GRADING RESULTS
Carat Weight **4.00 CARATS**
Color Grade **F**
Clarity Grade **VS 2**
Cut Grade **EXCELLENT**

October 12, 2024
IGI Report Number **LG658494886**
Description **LABORATORY GROWN DIAMOND**
Shape and Cutting Style **ROUND BRILLIANT**
Measurements **10.20 - 10.26 X 6.07 MM**
GRADING RESULTS
Carat Weight **4.00 CARATS**
Color Grade **F**
Clarity Grade **VS 2**
Cut Grade **EXCELLENT**

PROPORTIONS



Sample Image Used



ADDITIONAL GRADING INFORMATION

Polish **EXCELLENT**
Symmetry **EXCELLENT**
Fluorescence **NONE**
Inscription(s) **IGI LG658494886**

Comments: This Laboratory Grown Diamond was created by Chemical Vapor Deposition (CVD) growth process. Type IIa

ADDITIONAL GRADING INFORMATION

Polish **EXCELLENT**
Symmetry **EXCELLENT**
Fluorescence **NONE**
Inscription(s) **IGI LG658494886**
Comments: This Laboratory Grown Diamond was created by Chemical Vapor Deposition (CVD) growth process. Type IIa

COLOR

D E F G H I J Faint Very Light Light

CLARITY

IF	VS ¹⁻²	VS ¹⁻²	SI ¹⁻²	I ¹⁻³
Internally Flawless	Very Very Slightly Included	Very Slightly Included	Slightly Included	Included



IGI

October 12, 2024
IGI Report No LG658494886
ROUND BRILLIANT
10.20 - 10.26 X 6.07 MM
4.00 CARATS
F
VS 2
EXCELLENT
62%
59.3%
Medium To Slightly Thick (Faceted)
Pointed
EXCELLENT
EXCELLENT
NONE
IGI LG658494886
Comments: This Laboratory Grown Diamond was created by Chemical Vapor Deposition (CVD) growth process. Type IIa