



ELECTRONIC COPY

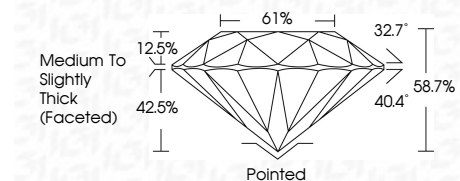
LG659400547 Report verification at igi.org



October 11, 2024 IGI Report Number LG659400547 Description LABORATORY GROWN DIAMOND Shape and Cutting Style ROUND BRILLIANT Measurements 6.57 - 6.62 X 3.87 MM

GRADING RESULTS

Carat Weight 1.04 CARAT Color Grade H Clarity Grade SI 2 Cut Grade EXCELLENT



ADDITIONAL GRADING INFORMATION

Polish VERY GOOD Symmetry VERY GOOD Fluorescence NONE Inscription(s) IGI LG659400547 Comments: As Grown - No indication of post-growth treatment. This Laboratory Grown Diamond was created by High Pressure High Temperature (HPHT) growth process. Type II



October 11, 2024 IGI Report No LG659400547 ROUND BRILLIANT 6.57 - 6.62 X 3.87 MM 1.04 CARAT H SI 2 EXCELLENT 6.57 61% Medium To Slightly Thick (Faceted) Pointed VERY GOOD VERY GOOD NONE NONE IGI LG659400547

LABORATORY GROWN DIAMOND REPORT

October 11, 2024 IGI Report Number LG659400547 Description LABORATORY GROWN DIAMOND Shape and Cutting Style ROUND BRILLIANT Measurements 6.57 - 6.62 X 3.87 MM

GRADING RESULTS

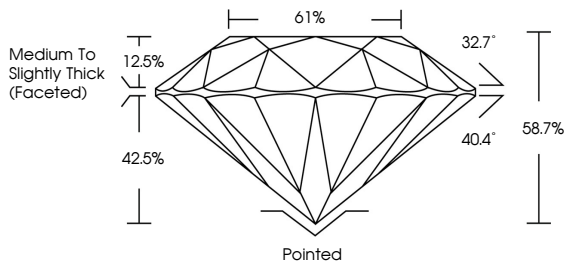
Carat Weight 1.04 CARAT Color Grade H Clarity Grade SI 2 Cut Grade EXCELLENT

ADDITIONAL GRADING INFORMATION

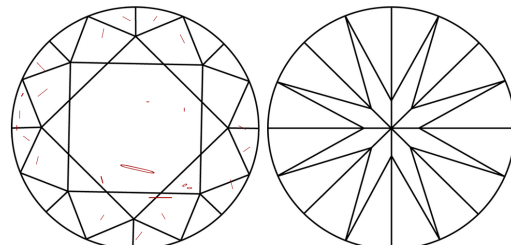
Polish VERY GOOD Symmetry VERY GOOD Fluorescence NONE Inscription(s) IGI LG659400547

Comments: As Grown - No indication of post-growth treatment. This Laboratory Grown Diamond was created by High Pressure High Temperature (HPHT) growth process. Type II

PROPORTIONS



CLARITY CHARACTERISTICS



KEY TO SYMBOLS

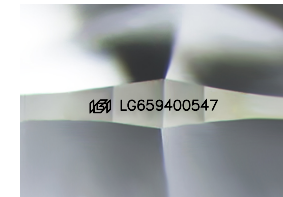
Red symbols indicate internal characteristics. Green symbols indicate external characteristics.

COLOR

D E F G H I J Faint Very Light Light

CLARITY

IF VS 1-2 VS 1-2 SI 1-2 I 1-3 Internally Flawless Very Very Slightly Included Very Slightly Included Slightly Included Included



Sample Image Used

