



ELECTRONIC COPY

LABORATORY GROWN DIAMOND REPORT

October 10, 2024	
IGI Report Number	LG659400983
Description	LABORATORY GROWN DIAMOND
Shape and Cutting Style	CUT CORNERED RECTANGULAR MODIFIED BRILLIANT
Measurements	9.85 X 7.26 X 4.90 MM

GRADING RESULTS

Carat Weight	3.05 CARATS
Color Grade	G
Clarity Grade	VS 1

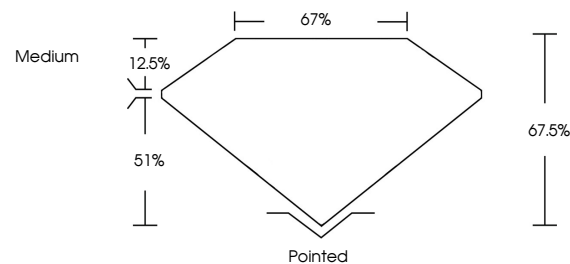
ADDITIONAL GRADING INFORMATION

Polish	EXCELLENT
Symmetry	EXCELLENT
Fluorescence	NONE
Inscription(s)	 LG659400983

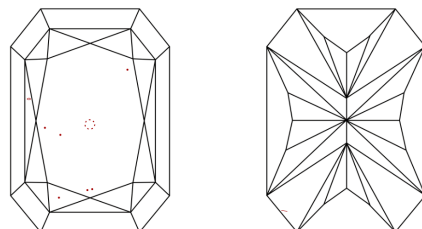
Comments: This Laboratory Grown Diamond was created by Chemical Vapor Deposition (CVD) growth process.
Type IIa

LG659400983
Report verification at lgi.org

PROPORTIONS

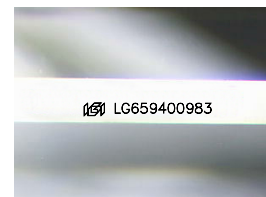


CLARITY CHARACTERISTICS



KEY TO SYMBOLS

Red symbols indicate internal characteristics.
Green symbols indicate external characteristics.



Sample Image Used

COLOR

D E F G H I J Faint Very Light Light

CLARITY

IF	VVS ¹⁻²	VS ¹⁻²	SI ¹⁻²	I ¹⁻³
Internally Flawless	Very Very Slightly Included	Very Slightly Included	Slightly Included	Included



© IGI 2020, International Gemological Institute

FD - 10 20

www.igi.org

LABORATORY GROWN DIAMOND REPORT

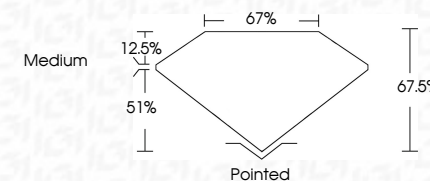


October 10, 2024	
IGI Report Number	LG659400983
Description	LABORATORY GROWN DIAMOND
Shape and Cutting Style	CUT CORNERED RECTANGULAR MODIFIED BRILLIANT

Measurements **9.85 X 7.26 X 4.90 MM**

GRADING RESULTS

Carat Weight	3.05 CARATS
Color Grade	G
Clarity Grade	VS 1



ADDITIONAL GRADING INFORMATION

Polish	EXCELLENT
Symmetry	EXCELLENT
Fluorescence	NONE
Inscription(s)	15 LG 659400983

Comments: This Laboratory Grown Diamond was created by Chemical Vapor Deposition (CVD) growth process.
Type IIa



October 10, 2024	GI REPORT NO. LG569400983	GI CORNERED RECT. MODIFIED BRILLIANT
Carat Weight	3.05 CARATS	
Color Grade	G	
Clarity Grade	VS 1	
Cut Grade	67.5%	
Depth	67%	
Table	Medium	
Girdle		
Culet	Pointed	
Polish	EXCELLENT	
Symmetry	EXCELLENT	
Fluorescence	NONE	
Inscriptions(s)	lg61 LG569400983	

Comments:

This is a Laboratory Grown Diamond was created using the Chemical Vapor Deposition (CVD) growth process.

Type IIG