



ELECTRONIC COPY

LABORATORY GROWN DIAMOND REPORT

October 11, 2024	
IGI Report Number	LG659401047
Description	LABORATORY GROWN DIAMOND
Shape and Cutting Style	CUT CORNERED RECTANGULAR MODIFIED BRILLIANT
Measurements	11.92 X 8.22 X 5.49 MM

GRADING RESULTS

Carat Weight	4.81 CARATS
Color Grade	E
Clarity Grade	VS 1

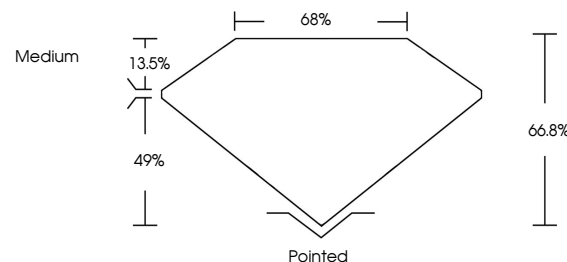
ADDITIONAL GRADING INFORMATION

Polish	EXCELLENT
Symmetry	EXCELLENT
Fluorescence	NONE
Inscription(s)	 LG659401047

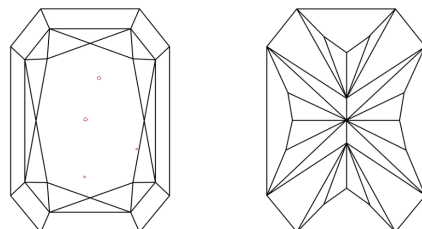
Comments: This Laboratory Grown Diamond was created by Chemical Vapor Deposition (CVD) growth process.
Type IIa

LG659401047
Report verification at lgi.org

PROPORTIONS

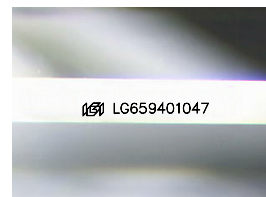


CLARITY CHARACTERISTICS



KEY TO SYMBOLS

Red symbols indicate internal characteristics.
Green symbols indicate external characteristics.



Sample Image Used

COLOR

D E F G H I J Faint Very Light Light

CLARITY

IF	VVS ¹⁻²	VS ¹⁻²	SI ¹⁻²	I ¹⁻³
Internally Flawless	Very Very Slightly Included	Very Slightly Included	Slightly Included	Included



© IGI 2020, International Gemological Institute

FD - 10 20

www.igi.org

LABORATORY GROWN DIAMOND REPORT

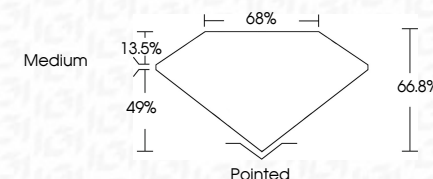


October 11, 2024	
IGI Report Number	LG659401047
Description	LABORATORY GROWN DIAMOND
Shape and Cutting Style	CUT CORNERED RECTANGULAR MODIFIED BRILLIANT

Measurements 11.92 X 8.22 X 5.49 MM

GRADING RESULTS

Carat Weight	4.81 CARATS
Color Grade	E
Clarity Grade	VS 1



ADDITIONAL GRADING INFORMATION

Polish	EXCELLENT
Symmetry	EXCELLENT
Fluorescence	NONE
Inscription(s)	15 LG 659401047

Comments: This Laboratory Grown Diamond was created by Chemical Vapor Deposition (CVD) growth process.
Type IIa



October 11, 2024	GI Report No. LG559401047
CUT CORNERED RECT. MODIFIED BRILLIANT	
11.92 X 8.22 X 5.40 MM	4.81 CARATS
Color Weight	E
Color Grade	VS 1
Clarity Grade	64.6%
Table	69%
Grading	Medium
Cluef	Poinked
Polish	EXCELLENT
Symmetry	EXCELLENT
Fluorescence	NONE
Inscriptions(s)	681 LG559401047

Comments:

The Laboratory Grown Diamond was
 analyzed using Laser Vapor Deposition
 (LVD) growth process.
 type IIG