



ELECTRONIC COPY

LG659408750
Report verification at igi.org



October 10, 2024

IGI Report Number **LG659408750**

Description **LABORATORY GROWN DIAMOND**

Shape and Cutting Style **EMERALD CUT**

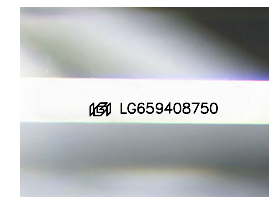
Measurements **9.21 X 6.13 X 3.95 MM**

GRADING RESULTS

Carat Weight **2.26 CARATS**

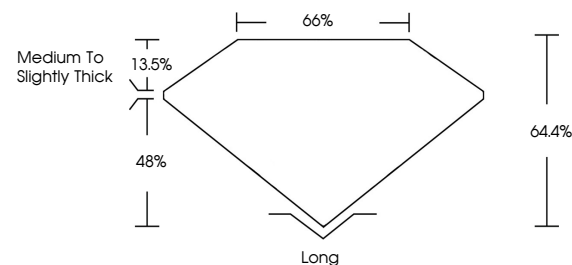
Color Grade **E**

Clarity Grade **VS 1**

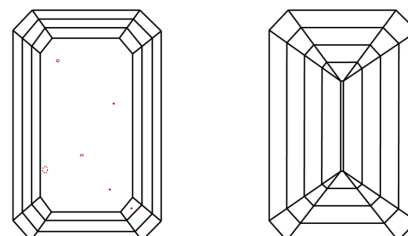


Sample Image Used

PROPORTIONS



CLARITY CHARACTERISTICS



KEY TO SYMBOLS

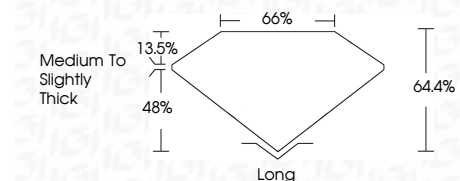
Red symbols indicate internal characteristics.
Green symbols indicate external characteristics.

COLOR

D E F G H I J Faint Very Light Light

CLARITY

IF	VS ¹⁻²	VS ¹⁻²	SI ¹⁻²	I ¹⁻³
Internally Flawless	Very Very Slightly Included	Very Slightly Included	Slightly Included	Included



ADDITIONAL GRADING INFORMATION

Polish **EXCELLENT**

Symmetry **EXCELLENT**

Fluorescence **NONE**

Inscription(s) **IGI LG659408750**

Comments: This Laboratory Grown Diamond was created by Chemical Vapor Deposition (CVD) growth process.
Type IIa



IGI

October 10, 2024
IGI Report No. LG659408750
EMERALD CUT

9.21 X 6.13 X 3.95 MM

2.26 CARATS
E

Color Grade
Depth 64.4%
Table 65%
Girdle
Medium to Slightly Thick

VS 1
Long
EXCELLENT
EXCELLENT
NONE
IGI LG659408750

Comments: This Laboratory Grown Diamond was created by Chemical Vapor Deposition (CVD) growth process.
Type IIa

