



ELECTRONIC COPY

LG659412108 Report verification at igi.org



October 11, 2024 IGI Report Number LG659412108 Description LABORATORY GROWN DIAMOND Shape and Cutting Style ROUND BRILLIANT Measurements 7.48 - 7.50 X 4.57 MM GRADING RESULTS Carat Weight 1.56 CARAT Color Grade E Clarity Grade VS 1 Cut Grade IDEAL

October 11, 2024 IGI Report Number LG659412108 Description LABORATORY GROWN DIAMOND Shape and Cutting Style ROUND BRILLIANT Measurements 7.48 - 7.50 X 4.57 MM

GRADING RESULTS

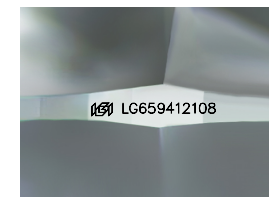
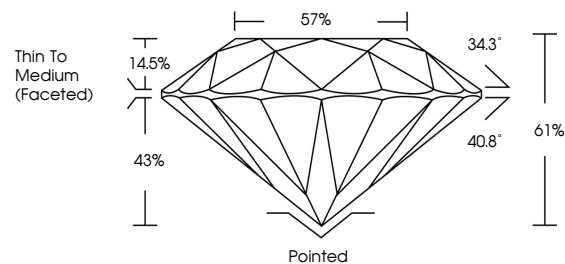
Carat Weight 1.56 CARAT Color Grade E Clarity Grade VS 1 Cut Grade IDEAL

ADDITIONAL GRADING INFORMATION

Polish EXCELLENT Symmetry EXCELLENT Fluorescence NONE Inscription(s) IGI LG659412108

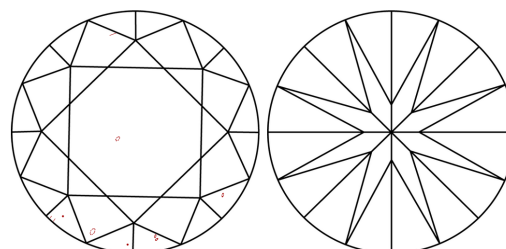
Comments: This Laboratory Grown Diamond was created by Chemical Vapor Deposition (CVD) growth process. Type IIa

PROPORTIONS



Sample Image Used

CLARITY CHARACTERISTICS



KEY TO SYMBOLS

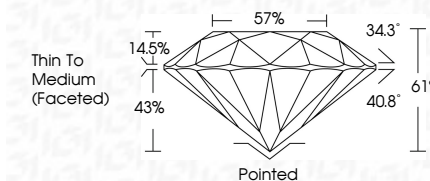
Red symbols indicate internal characteristics. Green symbols indicate external characteristics.

COLOR

D E F G H I J Faint Very Light Light

CLARITY

IF VS 1-2 VS 1-2 SI 1-2 I 1-3 Internally Flawless Very Very Slightly Included Very Slightly Included Slightly Included Included



ADDITIONAL GRADING INFORMATION

Polish EXCELLENT Symmetry EXCELLENT Fluorescence NONE Inscription(s) IGI LG659412108 Comments: This Laboratory Grown Diamond was created by Chemical Vapor Deposition (CVD) growth process. Type IIa



IGI



October 11, 2024 IGI Report No LG659412108 ROUND BRILLIANT 7.48 - 7.50 X 4.57 MM 1.56 CARAT E VS 1 IDEAL 61% 57% Thin To Medium (Faceted) Pointed EXCELLENT EXCELLENT NONE NONE IGI LG659412108 Comments: This Laboratory Grown Diamond was created by Chemical Vapor Deposition (CVD) growth process. Type IIa