



ELECTRONIC COPY

LABORATORY GROWN DIAMOND REPORT

October 13, 2024
IGI Report Number LG659412280
Description LABORATORY GROWN DIAMOND
Shape and Cutting Style CUT CORNERED RECTANGULAR MODIFIED BRILLIANT
Measurements 7.82 X 5.56 X 3.94 MM

GRADING RESULTS

Carat Weight 1.50 CARAT
Color Grade F
Clarity Grade VS 2

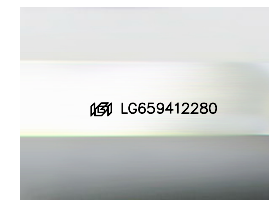
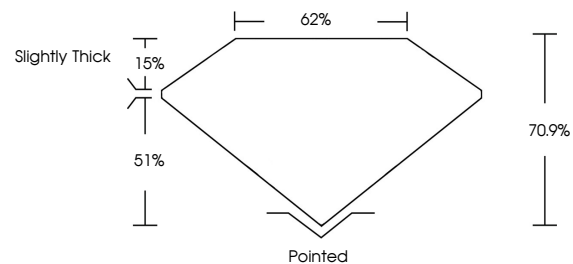
ADDITIONAL GRADING INFORMATION

Polish EXCELLENT
Symmetry EXCELLENT
Fluorescence NONE

Inscription(s) LG659412280

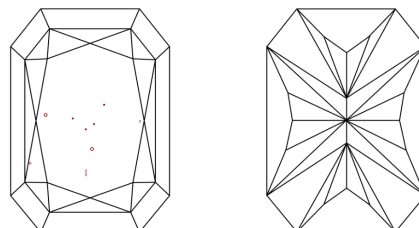
Comments: This Laboratory Grown Diamond was created by Chemical Vapor Deposition (CVD) growth process.
Type IIa

PROPORTIONS



Sample Image Used

CLARITY CHARACTERISTICS



KEY TO SYMBOLS

Red symbols indicate internal characteristics.
Green symbols indicate external characteristics.

COLOR

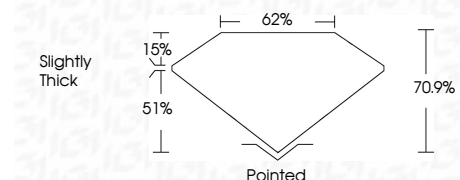
D E F G H I J Faint Very Light Light

CLARITY

IF VS 1-2 VS 1-2 SI 1-2 I 1-3
Internally Flawless Very Very Slightly Included Very Slightly Included Slightly Included Included



October 13, 2024
IGI Report Number LG659412280
Description LABORATORY GROWN DIAMOND
Shape and Cutting Style CUT CORNERED RECTANGULAR MODIFIED BRILLIANT
Measurements 7.82 X 5.56 X 3.94 MM
GRADING RESULTS
Carat Weight 1.50 CARAT
Color Grade F
Clarity Grade VS 2



ADDITIONAL GRADING INFORMATION

Polish EXCELLENT
Symmetry EXCELLENT
Fluorescence NONE
Inscription(s) LG659412280

Comments: This Laboratory Grown Diamond was created by Chemical Vapor Deposition (CVD) growth process.
Type IIa



IGI



October 13, 2024
IGI Report No LG659412280
CUT CORNERED RECT. MODIFIED BRILLIANT
7.82 X 5.56 X 3.94 MM
1.50 CARAT
F
VS 2
70.9%
62%
Slightly Thick
Pointed
EXCELLENT
EXCELLENT
NONE
None
 LG659412280

Comments: This Laboratory Grown Diamond was created by Chemical Vapor Deposition (CVD) growth process.
Type IIa