



ELECTRONIC COPY

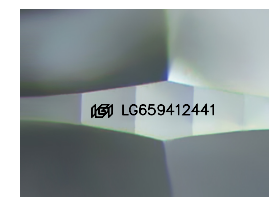
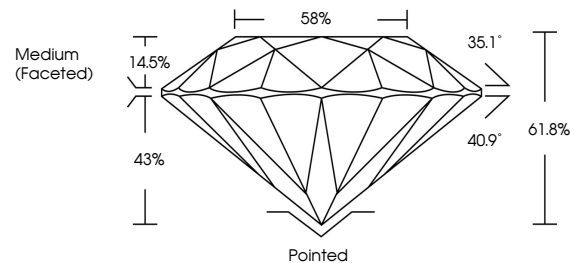
LG659412441
Report verification at igi.org



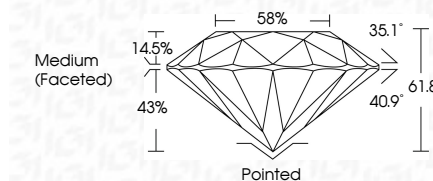
October 12, 2024
IGI Report Number LG659412441
Description LABORATORY GROWN DIAMOND
Shape and Cutting Style ROUND BRILLIANT
Measurements 7.39 - 7.43 X 4.58 MM
GRADING RESULTS
Carat Weight 1.55 CARAT
Color Grade D
Clarity Grade VS 1
Cut Grade IDEAL

October 12, 2024
IGI Report Number LG659412441
Description LABORATORY GROWN DIAMOND
Shape and Cutting Style ROUND BRILLIANT
Measurements 7.39 - 7.43 X 4.58 MM
GRADING RESULTS
Carat Weight 1.55 CARAT
Color Grade D
Clarity Grade VS 1
Cut Grade IDEAL

PROPORTIONS



Sample Image Used



ADDITIONAL GRADING INFORMATION

Polish EXCELLENT
Symmetry EXCELLENT
Fluorescence NONE
Inscription(s) IGI LG659412441

Comments: This Laboratory Grown Diamond was created by Chemical Vapor Deposition (CVD) growth process. Type IIa

ADDITIONAL GRADING INFORMATION

Polish EXCELLENT
Symmetry EXCELLENT
Fluorescence NONE
Inscription(s) IGI LG659412441
Comments: This Laboratory Grown Diamond was created by Chemical Vapor Deposition (CVD) growth process. Type IIa

COLOR

D E F G H I J Faint Very Light Light

CLARITY

IF VS 1-2 VS 1-2 SI 1-2 I 1-3
Internally Flawless Very Very Slightly Included Very Slightly Included Slightly Included Included



IGI

October 12, 2024
IGI Report No LG659412441
ROUND BRILLIANT
7.39 - 7.43 X 4.58 MM
1.55 CARAT
Color Grade D
Clarity Grade VS 1
Depth 61.8%
Table 58%
Girdle Medium (Faceted)
Culet Pointed
Polish EXCELLENT
Symmetry EXCELLENT
Fluorescence NONE
Inscriptions IGI LG659412441
Comments: This Laboratory Grown Diamond was created by Chemical Vapor Deposition (CVD) growth process. Type IIa