



**ELECTRONIC COPY**

## LABORATORY GROWN DIAMOND REPORT

October 10, 2024	
IGI Report Number	LG659413201
Description	LABORATORY GROWN DIAMOND
Shape and Cutting Style	SQUARE CUSHION MODIFIED BRILLIANT
Measurements	7.57 X 7.43 X 4.81 MM

## GRADING RESULTS

Carat Weight	2.01 CARATS
Color Grade	D
Clarity Grade	VS 1

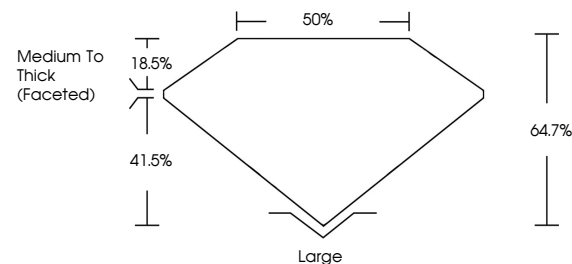
### ADDITIONAL GRADING INFORMATION

Polish	EXCELLENT
Symmetry	EXCELLENT
Fluorescence	NONE
Inscription(s)	 LG659413201

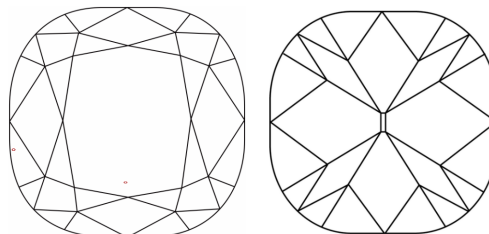
Comments: This Laboratory Grown Diamond was created by Chemical Vapor Deposition (CVD) growth process.  
Type IIa

LG659413201  
Report verification at [igi.org](https://igi.org)

## PROPORTIONS

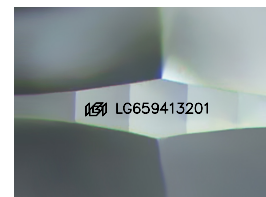


## CLARITY CHARACTERISTICS



## KEY TO SYMBOLS

Red symbols indicate internal characteristics.  
Green symbols indicate external characteristics.



Sample Image Used

**COLOR**

D E F G H I J Faint Very Light Light

## CLARITY

IF	VVS <sup>1-2</sup>	VS <sup>1-2</sup>	SI <sup>1-2</sup>	I <sup>1-3</sup>
Internally Flawless	Very Very Slightly Included	Very Slightly Included	Slightly Included	Included



© IGI 2020, International Gemological Institute

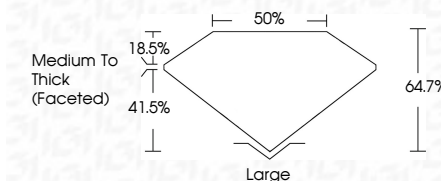
FD - 10 20

THIS DOCUMENT WAS PRODUCED WITH THE FOLLOWING SECURITY MEASURES: SPECIAL DOCUMENT PAPER, INK SCREENS, WATERMARK, BACKGROUND DESIGNS, HOLOGRAM AND OTHER SECURITY FEATURES NOT LISTED AND DO EXCEED DOCUMENT SECURITY INDUSTRY GUIDELINE


## LABORATORY GROWN DIAMOND REPORT



October 10, 2024	
IGI Report Number	LG659413201
Description	LABORATORY GROWN DIAMOND
Shape and Cutting Style	SQUARE CUSHION MODIFIED BRILLIANT
Measurements	7.57 X 7.43 X 4.81 MM
GRADING RESULTS	
Carat Weight	2.01 CARATS
Color Grade	D
Clarity Grade	VS 1



### ADDITIONAL GRADING INFORMATION

Polish	EXCELLENT
Symmetry	EXCELLENT
Fluorescence	NONE
Inscription(s)	 LG659413201
<p>Comments: This Laboratory Grown Diamond was created by Chemical Vapor Deposition (CVD) growth process.</p> <p>Type IIa</p>	



October 10, 2024	GJ Report No. LG559413201	
SQUARE CLUSHION ORIENTED BRILLIANT	2.01 CARATS	
1.57 X 7.45 X 4.51 MM	Color Grade	D
Carat Weight	Clarity Grade	VS 1
	Depth	64.7%
	Table	50%
	Gable	Medium to Thick (Faceted)
	Culet	Large
	Polish	EXCELLENT
	Symmetry	EXCELLENT
	Fluorescence	NONE
	Inscriptions(s)	6891 LG559413201

Comments:

The Laboratory Grown Diamond was  
 created using the Chemical Vapor Deposition  
 (CVD) growth process.

Type IIG