



ELECTRONIC COPY

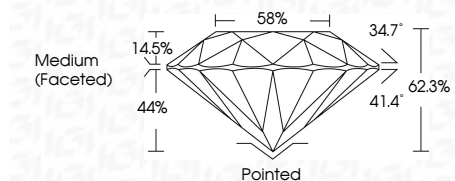
LG659425336 Report verification at igi.org



October 10, 2024 IGI Report Number LG659425336 Description LABORATORY GROWN DIAMOND Shape and Cutting Style ROUND BRILLIANT Measurements 8.27 - 8.30 X 5.17 MM

GRADING RESULTS

Carat Weight 2.21 CARATS Color Grade E Clarity Grade VVS 2 Cut Grade IDEAL



ADDITIONAL GRADING INFORMATION

Polish EXCELLENT Symmetry EXCELLENT Fluorescence NONE Inscription(s) IGI LG659425336 Comments: This Laboratory Grown Diamond was created by Chemical Vapor Deposition (CVD) growth process. Type IIa



October 10, 2024 IGI Report No LG659425336 ROUND BRILLIANT 8.27 - 8.30 X 5.17 MM 2.21 CARATS E Color Grade VVS 2 IDEAL 62.3% 58% Medium (Faceted) Pointed EXCELLENT EXCELLENT NONE NONE IGI LG659425336 Comments: This Laboratory Grown Diamond was created by Chemical Vapor Deposition (CVD) growth process. Type IIa

October 10, 2024 IGI Report Number LG659425336 Description LABORATORY GROWN DIAMOND Shape and Cutting Style ROUND BRILLIANT Measurements 8.27 - 8.30 X 5.17 MM

GRADING RESULTS

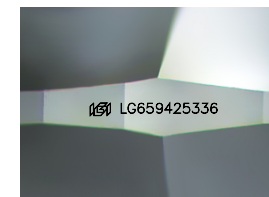
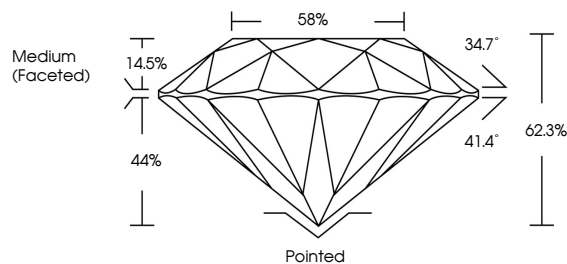
Carat Weight 2.21 CARATS Color Grade E Clarity Grade VVS 2 Cut Grade IDEAL

ADDITIONAL GRADING INFORMATION

Polish EXCELLENT Symmetry EXCELLENT Fluorescence NONE Inscription(s) IGI LG659425336

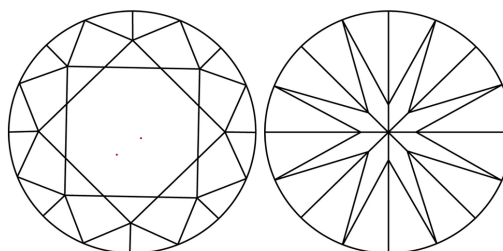
Comments: This Laboratory Grown Diamond was created by Chemical Vapor Deposition (CVD) growth process. Type IIa

PROPORTIONS



Sample Image Used

CLARITY CHARACTERISTICS



KEY TO SYMBOLS

Red symbols indicate internal characteristics. Green symbols indicate external characteristics.

COLOR

D E F G H I J Faint Very Light Light

CLARITY

IF VVS 1-2 VS 1-2 SI 1-2 I 1-3 Internally Flawless Very Very Slightly Included Very Slightly Included Slightly Included Included

