



ELECTRONIC COPY

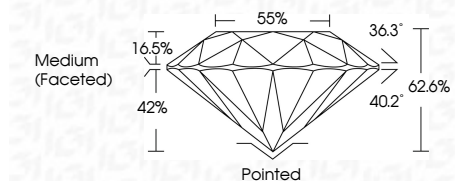
LG659425401
Report verification at igi.org



October 11, 2024
IGI Report Number LG659425401
Description LABORATORY GROWN DIAMOND
Shape and Cutting Style ROUND BRILLIANT
Measurements 6.34 - 6.37 X 3.98 MM

GRADING RESULTS

Carat Weight 1.00 CARAT
Color Grade F
Clarity Grade VVS 2
Cut Grade EXCELLENT



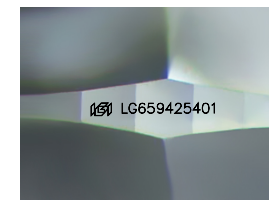
ADDITIONAL GRADING INFORMATION

Polish EXCELLENT
Symmetry EXCELLENT
Fluorescence NONE
Inscription(s) IGI LG659425401
Comments: This Laboratory Grown Diamond was created by Chemical Vapor Deposition (CVD) growth process. Type IIa



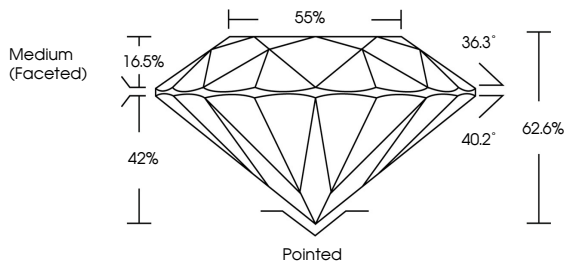
Table with 2 columns: Property and Value. Includes Carat Weight (1.00 CARAT), Color Grade (F), Clarity Grade (VVS 2), Depth (62.6%), Table (55%), Girdle (Medium (Faceted)), Cut (Pointed), Polish (EXCELLENT), Symmetry (EXCELLENT), Fluorescence (NONE), and Inscription(s) (IGI LG659425401).

October 11, 2024
IGI Report No LG659425401
ROUND BRILLIANT
6.34 - 6.37 X 3.98 MM
1.00 CARAT F
VVS 2 EXCELLENT 62.6% 55%
Medium (Faceted)
Pointed EXCELLENT EXCELLENT NONE IGI LG659425401
Comments: This Laboratory Grown Diamond was created by Chemical Vapor Deposition (CVD) growth process. Type IIa

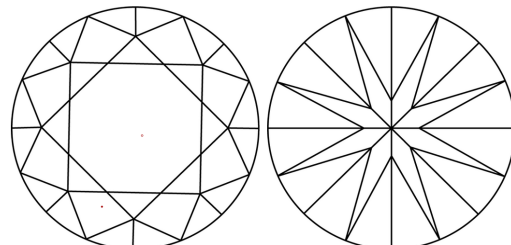


Sample Image Used

PROPORTIONS



CLARITY CHARACTERISTICS



KEY TO SYMBOLS

Red symbols indicate internal characteristics.
Green symbols indicate external characteristics.

COLOR

Color scale table with categories: D, E, F, G, H, I, J, Faint, Very Light, Light

CLARITY

Clarity scale table with categories: IF, VVS 1-2, VS 1-2, SI 1-2, I 1-3, Internally Flawless, Very Very Slightly Included, Very Slightly Included, Slightly Included, Included

