



ELECTRONIC COPY

LABORATORY GROWN DIAMOND REPORT

October 13, 2024  
IGI Report Number LG659425923  
Description LABORATORY GROWN DIAMOND  
Shape and Cutting Style PRINCESS CUT  
Measurements 6.22 X 6.19 X 4.65 MM

GRADING RESULTS

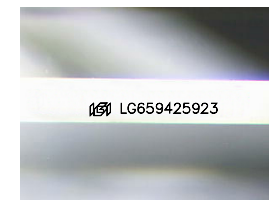
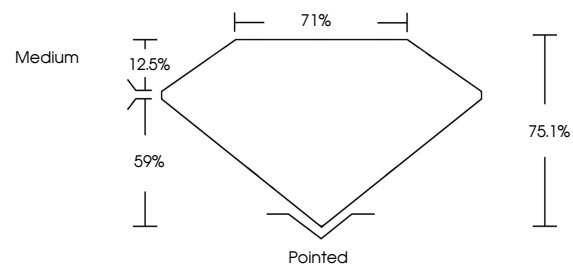
Carat Weight 1.58 CARAT  
Color Grade E  
Clarity Grade VVS 2

ADDITIONAL GRADING INFORMATION

Polish EXCELLENT  
Symmetry EXCELLENT  
Fluorescence NONE  
Inscription(s) IGI LG659425923

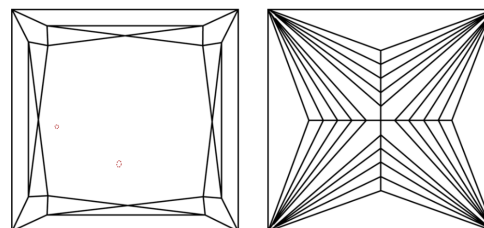
Comments: This Laboratory Grown Diamond was created by Chemical Vapor Deposition (CVD) growth process.  
Type IIa

PROPORTIONS



Sample Image Used

CLARITY CHARACTERISTICS



KEY TO SYMBOLS

Red symbols indicate internal characteristics.  
Green symbols indicate external characteristics.

COLOR

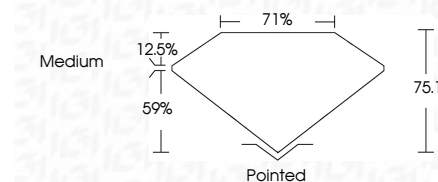
D E F G H I J Faint Very Light Light

CLARITY

IF VS 1-2 VS 1-2 SI 1-2 I 1-3  
Internally Flawless Very Very Slightly Included Very Slightly Included Slightly Included Included



October 13, 2024  
IGI Report Number LG659425923  
Description LABORATORY GROWN DIAMOND  
Shape and Cutting Style PRINCESS CUT  
Measurements 6.22 X 6.19 X 4.65 MM  
GRADING RESULTS  
Carat Weight 1.58 CARAT  
Color Grade E  
Clarity Grade VVS 2



ADDITIONAL GRADING INFORMATION

Polish EXCELLENT  
Symmetry EXCELLENT  
Fluorescence NONE  
Inscription(s) IGI LG659425923  
Comments: This Laboratory Grown Diamond was created by Chemical Vapor Deposition (CVD) growth process.  
Type IIa



IGI



October 13, 2024  
IGI Report No. LG659425923  
PRINCESS CUT  
6.22 X 6.19 X 4.65 MM  
1.58 CARAT  
Color Grade E  
Clarity Grade VVS 2  
Depth 75.1%  
Table 71%  
Girdle Medium  
Culet Pointed  
Polish EXCELLENT  
Symmetry EXCELLENT  
Fluorescence NONE  
Inscription(s) IGI LG659425923  
Comments: This Laboratory Grown Diamond was created by Chemical Vapor Deposition (CVD) growth process.  
Type IIa