



**ELECTRONIC COPY**

LG659427122

Report verification at [igi.org](http://igi.org)

**LABORATORY GROWN DIAMOND REPORT**

October 31, 2024  
IGI Report Number **LG659427122**  
Description **LABORATORY GROWN DIAMOND**  
Shape and Cutting Style **ROUND BRILLIANT**  
Measurements **8.08 - 8.11 X 5.05 MM**

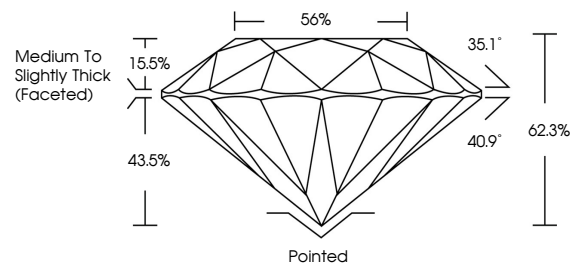
**GRADING RESULTS**

Carat Weight **2.03 CARATS**  
Color Grade **H**  
Clarity Grade **VVS 1**  
Cut Grade **IDEAL**

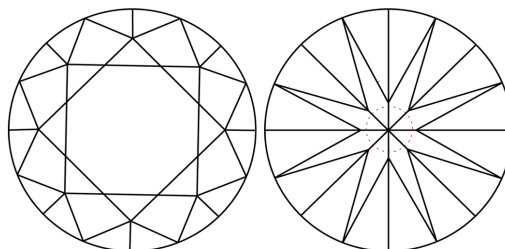
**ADDITIONAL GRADING INFORMATION**

Polish **EXCELLENT**  
Symmetry **EXCELLENT**  
Fluorescence **NONE**  
Inscription(s) **LG659427122**

**PROPORTIONS**



**CLARITY CHARACTERISTICS**



**KEY TO SYMBOLS**

Red symbols indicate internal characteristics.  
Green symbols indicate external characteristics.

**GRADING SCALES**

**CLARITY**

IF	VVS <sup>1-2</sup>	VS <sup>1-2</sup>	SI <sup>1-2</sup>	I <sup>1-3</sup>
Internally Flawless	Very Very Slightly Included	Very Slightly Included	Slightly Included	Included

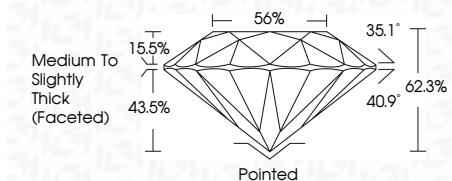
**COLOR**

D	E	F	G	H	I	J	Faint	Very Light	Light

October 31, 2024  
IGI Report Number **LG659427122**  
Description **LABORATORY GROWN DIAMOND**  
Shape and Cutting Style **ROUND BRILLIANT**  
Measurements **8.08 - 8.11 X 5.05 MM**

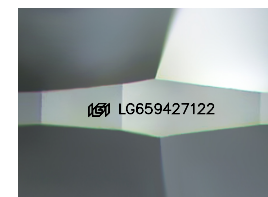
**GRADING RESULTS**

Carat Weight **2.03 CARATS**  
Color Grade **H**  
Clarity Grade **VVS 1**  
Cut Grade **IDEAL**



**ADDITIONAL GRADING INFORMATION**

Polish **EXCELLENT**  
Symmetry **EXCELLENT**  
Fluorescence **NONE**  
Inscription(s) **LG659427122**



Sample Image Used



**IGI**

October 31, 2024  
IGI Report No **LG659427122**  
**ROUND BRILLIANT**  
Carat Weight **2.03 CARATS**  
Color Grade **H**  
Clarity Grade **VVS 1**  
Depth **IDEAL**  
Table **62.3%**  
Girdle **56%**  
Medium To Slightly Thick (Faceted)  
Culet **Pointed**  
Polish **EXCELLENT**  
Symmetry **EXCELLENT**  
Fluorescence **NONE**  
Inscriptions(s) **LG659427122**