



ELECTRONIC COPY

LABORATORY GROWN DIAMOND REPORT

October 31, 2024
 IGI Report Number **LG659427179**
 Description **LABORATORY GROWN DIAMOND**
 Shape and Cutting Style **ROUND BRILLIANT**
 Measurements **7.43 - 7.45 X 4.62 MM**

GRADING RESULTS

Carat Weight **1.56 CARAT**
 Color Grade **H**
 Clarity Grade **VVS 2**
 Cut Grade **IDEAL**

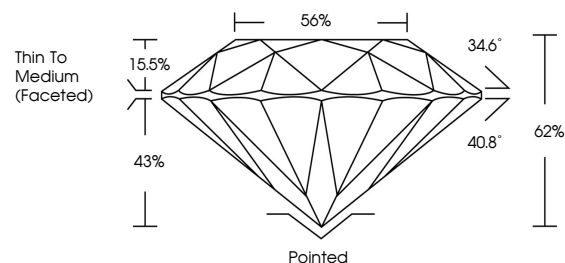
ADDITIONAL GRADING INFORMATION

Polish **EXCELLENT**
 Symmetry **EXCELLENT**
 Fluorescence **NONE**
 Inscription(s) **LG659427179**

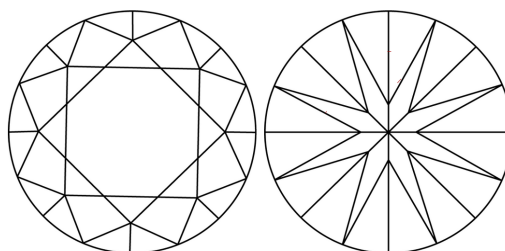
LABORATORY GROWN DIAMOND REPORT

LG659427179
 Report verification at igi.org

PROPORTIONS



CLARITY CHARACTERISTICS



KEY TO SYMBOLS

Red symbols indicate internal characteristics.
 Green symbols indicate external characteristics.

**LABORATORY GROWN
DIAMOND REPORT**

GRADING SCALES

CLARITY

IF	VVS ¹⁻²	VS ¹⁻²	SI ¹⁻²	I ¹⁻³
Internally Flawless	Very Very Slightly Included	Very Slightly Included	Slightly Included	Included

COLOR

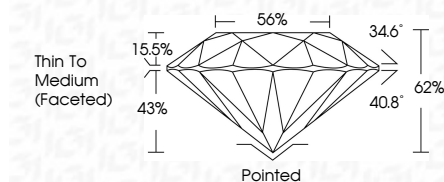
D	E	F	G	H	I	J	Faint	Very Light	Light
---	---	---	---	---	---	---	-------	------------	-------

LABORATORY GROWN DIAMOND REPORT

October 31, 2024
 IGI Report Number **LG659427179**
 Description **LABORATORY GROWN DIAMOND**
 Shape and Cutting Style **ROUND BRILLIANT**
 Measurements **7.43 - 7.45 X 4.62 MM**

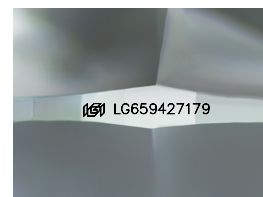
GRADING RESULTS

Carat Weight **1.56 CARAT**
 Color Grade **H**
 Clarity Grade **VVS 2**
 Cut Grade **IDEAL**



ADDITIONAL GRADING INFORMATION

Polish **EXCELLENT**
 Symmetry **EXCELLENT**
 Fluorescence **NONE**
 Inscription(s) **LG659427179**



Sample Image Used



IGI

October 31, 2024
 IGI Report No **LG659427179**
ROUND BRILLIANT
 7.43 - 7.45 X 4.62 MM
 Carat Weight **1.56 CARAT**
 Color Grade **H**
 Clarity Grade **VVS 2**
 Cut Grade **IDEAL**
 Depth **62%**
 Table **56%**
 Girdle
 Thin To Medium (Faceted)
 Culet **Pointed**
 Polish **EXCELLENT**
 Symmetry **EXCELLENT**
 Fluorescence **NONE**
 Inscription(s) **LG659427179**