



ELECTRONIC COPY

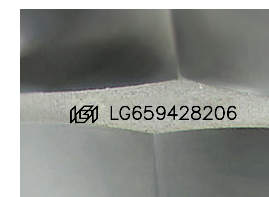
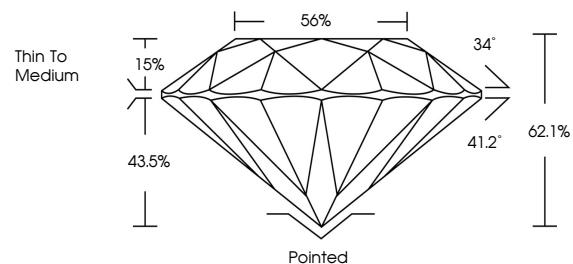
LG659428206
Report verification at igi.org



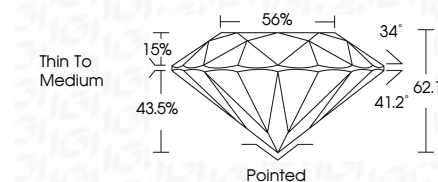
February 17, 2025
IGI Report Number **LG659428206**
Description **LABORATORY GROWN DIAMOND**
Shape and Cutting Style **ROUND BRILLIANT**
Measurements **6.51 - 6.55 X 4.06 MM**
GRADING RESULTS
Carat Weight **1.05 CARAT**
Color Grade **H**
Clarity Grade **VVS 2**
Cut Grade **IDEAL**

February 17, 2025
IGI Report Number **LG659428206**
Description **LABORATORY GROWN DIAMOND**
Shape and Cutting Style **ROUND BRILLIANT**
Measurements **6.51 - 6.55 X 4.06 MM**
GRADING RESULTS
Carat Weight **1.05 CARAT**
Color Grade **H**
Clarity Grade **VVS 2**
Cut Grade **IDEAL**

PROPORTIONS



Sample Image Used



ADDITIONAL GRADING INFORMATION
Polish **EXCELLENT**
Symmetry **EXCELLENT**
Fluorescence **NONE**
Inscription(s) **IGI LG659428206**
Comments: Presence of Subsurface inscription: Lightbox logo

COLOR

D E F G H I J Faint Very Light Light

CLARITY

IF VS¹⁻² VS¹⁻² SI¹⁻² I¹⁻³
Internally Flawless Very Very Slightly Included Very Slightly Included Slightly Included Included

ADDITIONAL GRADING INFORMATION

Polish **EXCELLENT**
Symmetry **EXCELLENT**
Fluorescence **NONE**
Inscription(s) **IGI LG659428206**
Comments: Presence of Subsurface inscription: Lightbox logo



IGI

February 17, 2025	1.05 CARAT	H	Pointed
IGI Report No LG659428206	EXCELLENT	EXCELLENT	EXCELLENT
ROUND BRILLIANT	VVS 2	IDEAL	NONE
6.51 - 6.55 X 4.06 MM	62.1%	56%	IGI LG659428206
Carat Weight	Thin To Medium		
Color Grade			
Clarity Grade			
Depth			
Table			
Girdle			
Culet			
Polish			
Symmetry			
Fluorescence			
Inscription(s)			
Comments: Presence of Subsurface inscription: Lightbox logo			