



**ELECTRONIC COPY**

LG659428280  
Report verification at igi.org



February 17, 2025

IGI Report Number **LG659428280**

Description **LABORATORY GROWN DIAMOND**

Shape and Cutting Style **ROUND BRILLIANT**

Measurements **6.42 - 6.46 X 4.03 MM**

**GRADING RESULTS**

Carat Weight **1.02 CARAT**

Color Grade **H**

Clarity Grade **VVS 2**

Cut Grade **IDEAL**

February 17, 2025

IGI Report Number **LG659428280**

Description **LABORATORY GROWN DIAMOND**

Shape and Cutting Style **ROUND BRILLIANT**

Measurements **6.42 - 6.46 X 4.03 MM**

**GRADING RESULTS**

Carat Weight **1.02 CARAT**

Color Grade **H**

Clarity Grade **VVS 2**

Cut Grade **IDEAL**

**ADDITIONAL GRADING INFORMATION**

Polish **EXCELLENT**

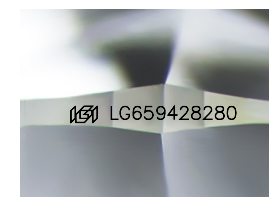
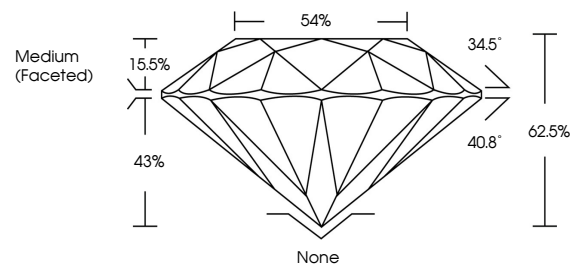
Symmetry **EXCELLENT**

Fluorescence **NONE**

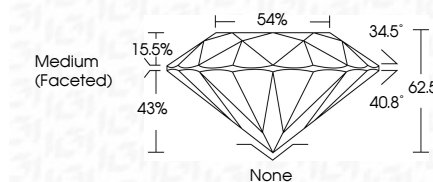
Inscription(s) **IGI LG659428280**

Comments: Presence of Subsurface inscription: Lightbox logo

**PROPORTIONS**



Sample Image Used



**COLOR**

D E F G H I J Faint Very Light Light

**CLARITY**

IF WS<sup>1-2</sup> VS<sup>1-2</sup> SI<sup>1-2</sup> I<sup>1-3</sup>

Internally Flawless Very Very Slightly Included Very Slightly Included Slightly Included Included

**ADDITIONAL GRADING INFORMATION**

Polish **EXCELLENT**

Symmetry **EXCELLENT**

Fluorescence **NONE**

Inscription(s) **IGI LG659428280**

Comments: Presence of Subsurface inscription: Lightbox logo



**IGI**

February 17, 2025	IGI Report No LG659428280	ROUND BRILLIANT	6.42 - 6.46 X 4.03 MM	1.02 CARAT	H	VVS 2	IDEAL	62.5%	54%	Medium (Faceted)	None	EXCELLENT	EXCELLENT	None	IGI LG659428280
Carat Weight	Color Grade	Clarity Grade	Cut Grade	Depth	Table	Girdle	Grille	Culet	Polish	Symmetry	Fluorescence	Inscription(s)	Comments: Presence of Subsurface inscription: Lightbox logo		