



**ELECTRONIC COPY**

LG659428440  
Report verification at [igi.org](http://igi.org)

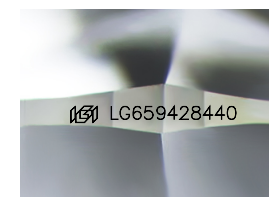
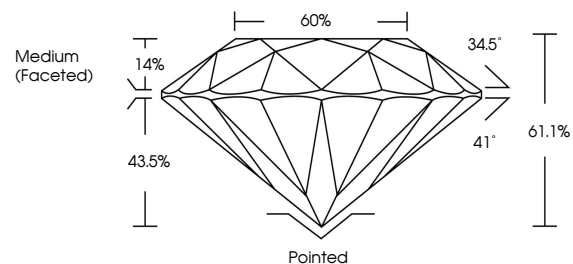


February 27, 2025  
IGI Report Number **LG659428440**  
Description **LABORATORY GROWN DIAMOND**  
Shape and Cutting Style **ROUND BRILLIANT**  
Measurements **11.18 - 11.23 X 6.85 MM**  
**GRADING RESULTS**  
Carat Weight **5.31 CARATS**  
Color Grade **G**  
Clarity Grade **VS 1**  
Cut Grade **IDEAL**

February 27, 2025  
IGI Report Number **LG659428440**  
Description **LABORATORY GROWN DIAMOND**  
Shape and Cutting Style **ROUND BRILLIANT**  
Measurements **11.18 - 11.23 X 6.85 MM**  
**GRADING RESULTS**  
Carat Weight **5.31 CARATS**  
Color Grade **G**  
Clarity Grade **VS 1**  
Cut Grade **IDEAL**

**ADDITIONAL GRADING INFORMATION**  
Polish **EXCELLENT**  
Symmetry **EXCELLENT**  
Fluorescence **NONE**  
Inscription(s) **IGI LG659428440**

**PROPORTIONS**



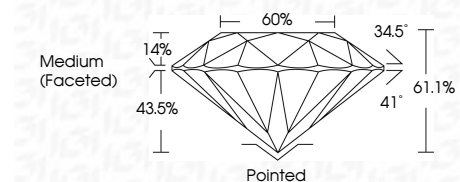
Sample Image Used

**COLOR**

D E F G H I J Faint Very Light Light

**CLARITY**

IF	VS <sup>1-2</sup>	VS <sup>1-2</sup>	SI <sup>1-2</sup>	I <sup>1-3</sup>
Internally Flawless	Very Very Slightly Included	Very Slightly Included	Slightly Included	Included



**ADDITIONAL GRADING INFORMATION**

Polish **EXCELLENT**  
Symmetry **EXCELLENT**  
Fluorescence **NONE**  
Inscription(s) **IGI LG659428440**



**IGI**



February 27, 2025  
IGI Report No **LG659428440**  
**ROUND BRILLIANT**

**5.31 CARATS**  
Carat Weight  
**G**  
Color Grade  
**VS 1**  
Clarity Grade  
**IDEAL**  
Depth  
**61.1%**  
Table  
**60%**  
Girdle  
**Medium (Faceted)**

**Pointed**  
Culet  
**EXCELLENT**  
Polish  
**EXCELLENT**  
Symmetry  
**EXCELLENT**  
Fluorescence  
**NONE**  
Inscription(s)  
**IGI LG659428440**