



**ELECTRONIC COPY**

LG659433351  
Report verification at igi.org



October 14, 2024  
IGI Report Number **LG659433351**  
Description **LABORATORY GROWN DIAMOND**  
Shape and Cutting Style **SQUARE CUSHION BRILLIANT**  
Measurements **10.14 X 10.00 X 6.36 MM**  
**GRADING RESULTS**  
Carat Weight **5.09 CARATS**  
Color Grade **D**  
Clarity Grade **VVS 2**

October 14, 2024  
IGI Report Number **LG659433351**  
Description **LABORATORY GROWN DIAMOND**  
Shape and Cutting Style **SQUARE CUSHION BRILLIANT**  
Measurements **10.14 X 10.00 X 6.36 MM**

**GRADING RESULTS**

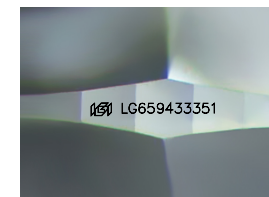
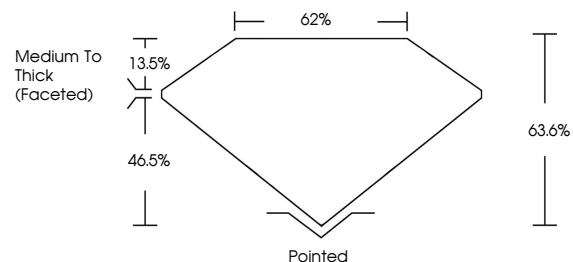
Carat Weight **5.09 CARATS**  
Color Grade **D**  
Clarity Grade **VVS 2**

**ADDITIONAL GRADING INFORMATION**

Polish **EXCELLENT**  
Symmetry **EXCELLENT**  
Fluorescence **NONE**  
Inscription(s) **LG659433351**

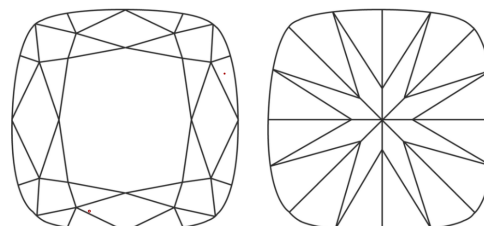
Comments: This Laboratory Grown Diamond was created by Chemical Vapor Deposition (CVD) growth process.  
Type IIa

**PROPORTIONS**



Sample Image Used

**CLARITY CHARACTERISTICS**



**KEY TO SYMBOLS**

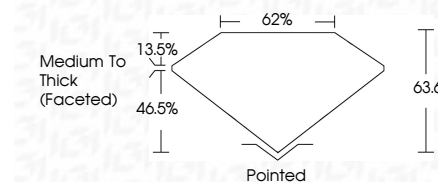
Red symbols indicate internal characteristics.  
Green symbols indicate external characteristics.

**COLOR**

D E F G H I J Faint Very Light Light

**CLARITY**

IF	VS <sup>1-2</sup>	VS <sup>1-2</sup>	SI <sup>1-2</sup>	I <sup>1-3</sup>
Internally Flawless	Very Very Slightly Included	Very Slightly Included	Slightly Included	Included



**ADDITIONAL GRADING INFORMATION**

Polish **EXCELLENT**  
Symmetry **EXCELLENT**  
Fluorescence **NONE**  
Inscription(s) **LG659433351**  
Comments: This Laboratory Grown Diamond was created by Chemical Vapor Deposition (CVD) growth process.  
Type IIa



**IGI**



October 14, 2024  
IGI Report No **LG659433351**  
**SQUARE CUSHION BRILLIANT**  
**10.14 X 10.00 X 6.36 MM**  
5.09 CARATS  
D  
5.09 CARATS  
D  
VS 2  
63.6%  
62%  
Medium To Thick (Faceted)  
Pointed  
EXCELLENT  
EXCELLENT  
NONE  
IGI LG659433351

Comments: This Laboratory Grown Diamond was created by Chemical Vapor Deposition (CVD) growth process.  
Type IIa