



ELECTRONIC COPY

LABORATORY GROWN DIAMOND REPORT

October 12, 2024
IGI Report Number LG659433379
Description LABORATORY GROWN DIAMOND
Shape and Cutting Style CUT CORNERED RECTANGULAR MODIFIED BRILLIANT
Measurements 11.15 X 7.63 X 5.35 MM

GRADING RESULTS

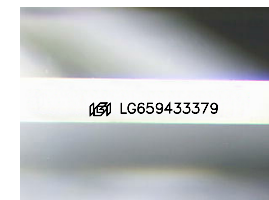
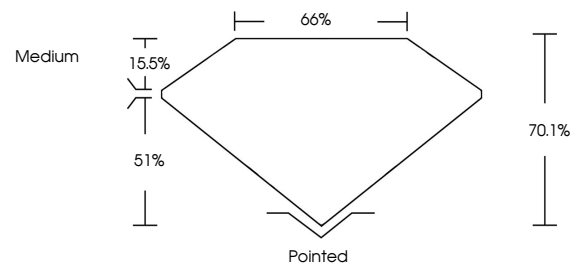
Carat Weight 4.01 CARATS
Color Grade D
Clarity Grade VS 1

ADDITIONAL GRADING INFORMATION

Polish EXCELLENT
Symmetry EXCELLENT
Fluorescence NONE
Inscription(s) IGI LG659433379

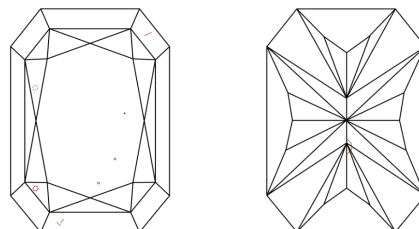
Comments: This Laboratory Grown Diamond was created by Chemical Vapor Deposition (CVD) growth process.
Type IIa

PROPORTIONS



Sample Image Used

CLARITY CHARACTERISTICS



KEY TO SYMBOLS

Red symbols indicate internal characteristics.
Green symbols indicate external characteristics.

COLOR

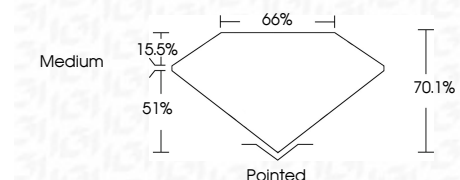
D E F G H I J Faint Very Light Light

CLARITY

IF VS 1-2 VS 1-2 SI 1-2 I 1-3
Internally Flawless Very Very Slightly Included Very Slightly Included Slightly Included Included



October 12, 2024
IGI Report Number LG659433379
Description LABORATORY GROWN DIAMOND
Shape and Cutting Style CUT CORNERED RECTANGULAR MODIFIED BRILLIANT
Measurements 11.15 X 7.63 X 5.35 MM
GRADING RESULTS
Carat Weight 4.01 CARATS
Color Grade D
Clarity Grade VS 1



ADDITIONAL GRADING INFORMATION

Polish EXCELLENT
Symmetry EXCELLENT
Fluorescence NONE
Inscription(s) IGI LG659433379
Comments: This Laboratory Grown Diamond was created by Chemical Vapor Deposition (CVD) growth process.
Type IIa



IGI



October 12, 2024
IGI Report No LG659433379
CUT CORNERED RECT. MODIFIED BRILLIANT
4.01 CARATS
D
4.01 CARATS
D
VS 1
70.1%
66%
Medium
Pointed
EXCELLENT
EXCELLENT
NONE
IGI LG659433379

Comments: This Laboratory Grown Diamond was created by Chemical Vapor Deposition (CVD) growth process.
Type IIa