



ELECTRONIC COPY

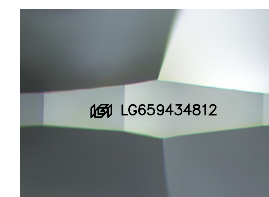
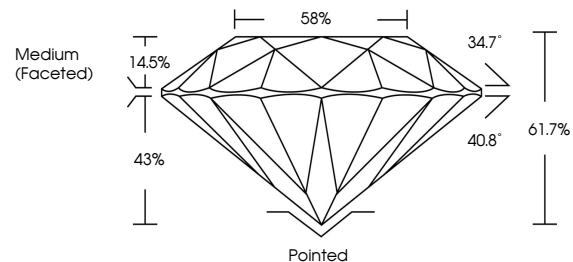
LG659434812
Report verification at igi.org



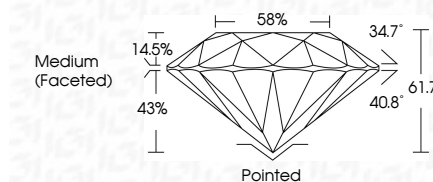
October 13, 2024
IGI Report Number LG659434812
Description LABORATORY GROWN DIAMOND
Shape and Cutting Style ROUND BRILLIANT
Measurements 10.21 - 10.26 X 6.31 MM
GRADING RESULTS
Carat Weight 4.08 CARATS
Color Grade F
Clarity Grade VVS 2
Cut Grade IDEAL

October 13, 2024
IGI Report Number LG659434812
Description LABORATORY GROWN DIAMOND
Shape and Cutting Style ROUND BRILLIANT
Measurements 10.21 - 10.26 X 6.31 MM
GRADING RESULTS
Carat Weight 4.08 CARATS
Color Grade F
Clarity Grade VVS 2
Cut Grade IDEAL

PROPORTIONS



Sample Image Used



ADDITIONAL GRADING INFORMATION

Polish EXCELLENT
Symmetry EXCELLENT
Fluorescence NONE
Inscription(s) LG659434812

Comments: This Laboratory Grown Diamond was created by Chemical Vapor Deposition (CVD) growth process. Type IIa

ADDITIONAL GRADING INFORMATION

Polish EXCELLENT
Symmetry EXCELLENT
Fluorescence NONE
Inscription(s) LG659434812
Comments: This Laboratory Grown Diamond was created by Chemical Vapor Deposition (CVD) growth process. Type IIa

COLOR

D E F G H I J Faint Very Light Light

CLARITY

IF VVS 1-2 VS 1-2 SI 1-2 I 1-3
Internally Flawless Very Very Slightly Included Very Slightly Included Slightly Included Included



October 13, 2024
IGI Report No LG659434812
ROUND BRILLIANT
10.21 - 10.26 X 6.31 MM
4.08 CARATS
F
VVS 2
IDEAL
61.7%
58%
Medium (Faceted)
Pointed
EXCELLENT
EXCELLENT
NONE
IGI LG659434812
Comments: This Laboratory Grown Diamond was created by Chemical Vapor Deposition (CVD) growth process. Type IIa