



**ELECTRONIC COPY**

## LABORATORY GROWN DIAMOND REPORT

October 14, 2024	
IGI Report Number	LG659436180
Description	LABORATORY GROWN DIAMOND
Shape and Cutting Style	CUT CORNERED RECTANGULAR MODIFIED BRILLIANT
Measurements	9.41 X 6.54 X 4.46 MM

## GRADING RESULTS

Carat Weight	2.40 CARATS
Color Grade	G
Clarity Grade	VVS 2

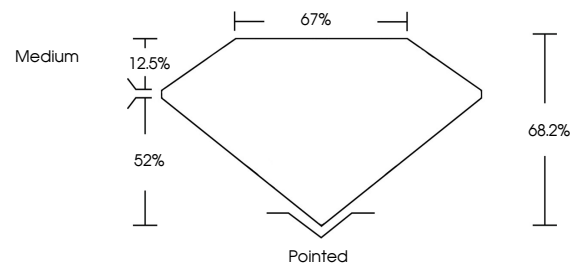
### ADDITIONAL GRADING INFORMATION

Polish	EXCELLENT
Symmetry	EXCELLENT
Fluorescence	NONE
Inscription(s)	15 LG659436180

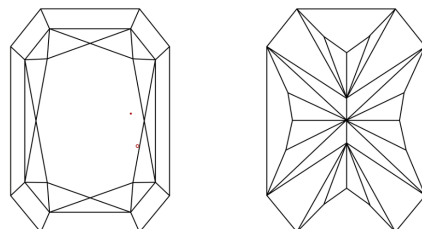
Comments: This Laboratory Grown Diamond was created by Chemical Vapor Deposition (CVD) growth process.  
Type IIa

LG659436180  
Report verification at [lgi.org](https://lgi.org)

## PROPORTIONS

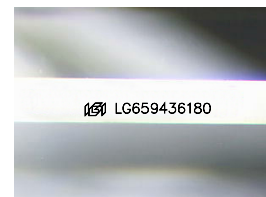


## CLARITY CHARACTERISTICS



### KEY TO SYMBOLS

Red symbols indicate internal characteristics.  
Green symbols indicate external characteristics.



Sample Image Used

## COLOR

D E F G H I J Faint Very Light Light

## CLARITY

IF	VVS <sup>1-2</sup>	VS <sup>1-2</sup>	SI <sup>1-2</sup>	I <sup>1-3</sup>
Internally Flawless	Very Very Slightly Included	Very Slightly Included	Slightly Included	Included



© IGI 2020, International Gemological Institute

FD - 10 20

**www.igi.org**

## LABORATORY GROWN DIAMOND REPORT

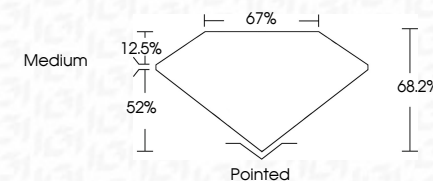


October 14, 2024	
IGI Report Number	LG659436180
Description	LABORATORY GROWN DIAMOND
Shape and Cutting Style	CUT CORNERED RECTANGULAR MODIFIED BRILLIANT

Measurements **9.41 X 6.54 X 4.46 MM**

## GRADING RESULTS

Carat Weight	2.40 CARATS
Color Grade	G
Clarity Grade	VVS2



### ADDITIONAL GRADING INFORMATION

Polish	EXCELLENT
Symmetry	EXCELLENT
Fluorescence	NONE
Inscription(s)	 LG659436180

Comments: This Laboratory Grown Diamond was created by Chemical Vapor Deposition (CVD) growth process.  
Type IIa



October 14, 2024	GL Report No. LG559456180
CUJ CORNERED RECT. MODIFIED BRILLIANT	
417 X 5.54 X 4.46 MM	
Carat Weight	2.40 CARATS
Color Grade	G
Clarity Grade	VVS 2
Depth	66.2%
Table	67%
Grade	Medium
Color	
Clarity	
Cutlet	Pointed
Polish	EXCELLENT
Symmetry	EXCELLENT
Fluorescence	NONE
Inscriptions(s)	6891 LG559456180

Comments:  
 This is a Heavy Crown Diamond was  
 created by Chemical Vapor Deposition  
 CVD growth process.  
 Type IIa