



INTERNATIONAL GEMOLOGICAL INSTITUTE

LABORATORY GROWN DIAMOND REPORT

October 16, 2024

IGI Report Number

LG659439881

Description

LABORATORY GROWN DIAMOND

Shape and Cutting Style

ROUND BRILLIANT

Measurements

5.72 - 5.76 X 3.66 MM

GRADING RESULTS

Carat Weight

0.75 CARAT

Color Grade

D

Clarity Grade

SI 1

Cut Grade

VERY GOOD

ADDITIONAL GRADING INFORMATION

Polish

VERY GOOD

Symmetry

VERY GOOD

Fluorescence

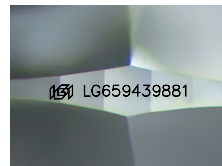
NONE

Inscription(s)

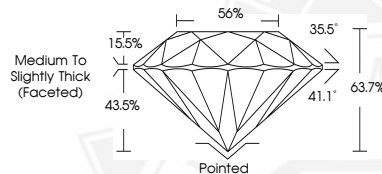
IGI LG659439881

Comments: This Laboratory Grown Diamond was created by Chemical Vapor Deposition (CVD) growth process.
Type IIa

ELECTRONIC COPY



Sample Image Used



October 16, 2024

IGI Report Number LG659439881

ROUND BRILLIANT

LABORATORY GROWN DIAMOND

5.72 - 5.76 X 3.66 MM

Carat Weight 0.75 CARAT

Color Grade D

Clarity Grade SI 1

Cut Grade VERY GOOD

Polish VERY GOOD

Symmetry VERY GOOD

Fluorescence NONE

Inscription(s) IGI LG659439881

Comments: This Laboratory Grown Diamond was created by Chemical Vapor Deposition (CVD) growth process. Type IIa



October 16, 2024

IGI Report Number LG659439881

ROUND BRILLIANT

LABORATORY GROWN DIAMOND

5.72 - 5.76 X 3.66 MM

Carat Weight 0.75 CARAT

Color Grade D

Clarity Grade SI 1

Cut Grade VERY GOOD

Polish VERY GOOD

Symmetry VERY GOOD

Fluorescence NONE

Inscription(s) IGI LG659439881

Comments: This Laboratory Grown Diamond was created by Chemical Vapor Deposition (CVD) growth process. Type IIa



THIS DOCUMENT WAS PRODUCED WITH THE FOLLOWING SECURITY MEASURES: SPECIAL DOCUMENT PAPER, INK SCREENS, WATERMARK, BACKGROUND DESIGNS, HOLOGRAM AND OTHER SECURITY FEATURES NOT LISTED AND DO EXCEED DOCUMENT SECURITY INDUSTRY GUIDELINES.

For terms & conditions and to verify this report, please visit www.igi.org