



ELECTRONIC COPY

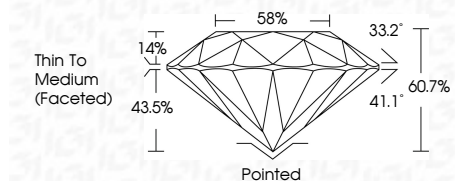
LG659440526 Report verification at igi.org



October 15, 2024 IGI Report Number LG659440526 Description LABORATORY GROWN DIAMOND Shape and Cutting Style ROUND BRILLIANT Measurements 6.59 - 6.63 X 4.01 MM

GRADING RESULTS

Carat Weight 1.06 CARAT Color Grade F Clarity Grade VS 2 Cut Grade IDEAL



ADDITIONAL GRADING INFORMATION

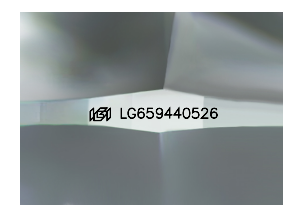
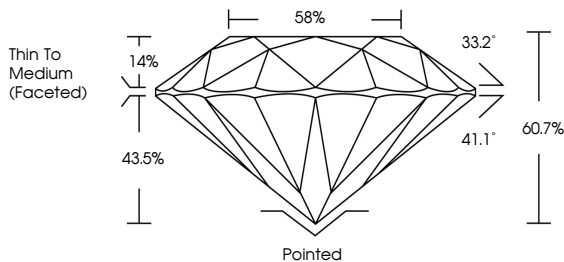
Polish EXCELLENT Symmetry EXCELLENT Fluorescence NONE Inscription(s) IGI LG659440526 Comments: This Laboratory Grown Diamond was created by Chemical Vapor Deposition (CVD) growth process. Type IIa



Table with 2 columns: Property and Value. Includes Carat Weight (1.06 CARAT), Color Grade (F), Clarity Grade (VS 2), Depth (60.7%), Table (58%), Girdle (Thin To Medium (Faceted)), Cut (Pointed), Polish (EXCELLENT), Symmetry (EXCELLENT), Fluorescence (NONE), and Inscription(s) (IGI LG659440526).

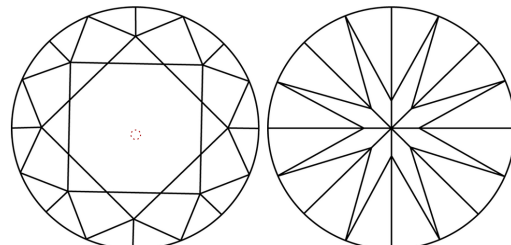
October 15, 2024 IGI Report No LG659440526 ROUND BRILLIANT 6.59 - 6.63 X 4.01 MM

PROPORTIONS



Sample Image Used

CLARITY CHARACTERISTICS



KEY TO SYMBOLS

Red symbols indicate internal characteristics. Green symbols indicate external characteristics.

COLOR

Color scale table with categories: D, E, F, G, H, I, J, Faint, Very Light, Light

CLARITY

Clarity scale table with categories: IF, VVS 1-2, VS 1-2, SI 1-2, I 1-3, Internally Flawless, Very Very Slightly Included, Very Slightly Included, Slightly Included, Included



THIS DOCUMENT WAS PRODUCED WITH THE FOLLOWING SECURITY MEASURES: SPECIAL DOCUMENT PAPER, INK SCREENS, WATERMARK BACKGROUND DESIGNS, HOLOGRAM AND OTHER SECURITY FEATURES NOT LISTED AND DO EXCEED DOCUMENT SECURITY INDUSTRY GUIDELINES.