

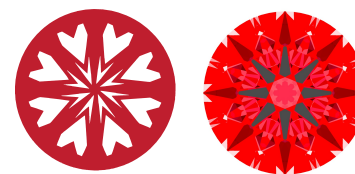


**INTERNATIONAL
GEMOLOGICAL
INSTITUTE**

LG659450109
Report verification at igi.org

LIGHT PERFORMANCE REPORT

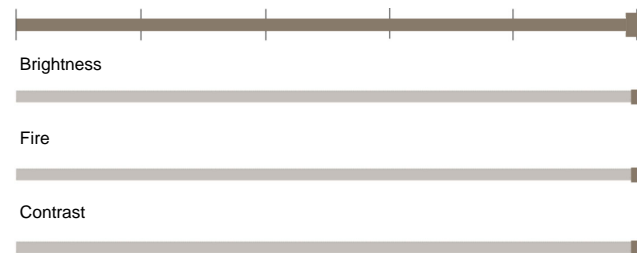
Light Performance Grade: Exceptional



Ideal-Scope representation

Low Moderate High Superior Exceptional

Light Performance



COLOR

D E F G H I J Faint Very Light Light

CLARITY

IF	VS ¹⁻²	VS ¹⁻²	SI ¹⁻²	I ¹⁻³
Internally Flawless	Very Very Slightly Included	Very Slightly Included	Slightly Included	Included

ELECTRONIC COPY

LABORATORY GROWN DIAMOND REPORT

October 14, 2024
IGI Report Number **LG659450109**
Description **LABORATORY GROWN DIAMOND**
Shape and Cutting Style **ROUND BRILLIANT**
Measurements **8.54 - 8.56 x 5.19 mm**

GRADING RESULTS

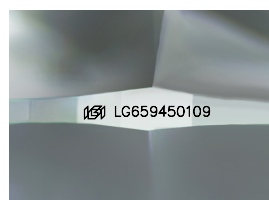
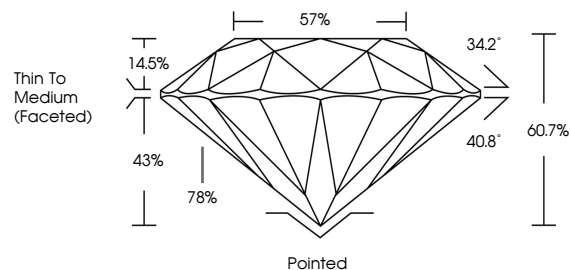
Carat Weight **2.31 CARATS**
Color Grade **E**
Clarity Grade **VVS 2**
Cut Grade **IDEAL**

ADDITIONAL GRADING INFORMATION

Polish **EXCELLENT**
Symmetry **EXCELLENT**
Fluorescence **NONE**
Inscription(s) **IGI LG659450109**

Comments: HEARTS & ARROWS
This Laboratory Grown Diamond was created by Chemical Vapor Deposition (CVD) growth process. Type IIa

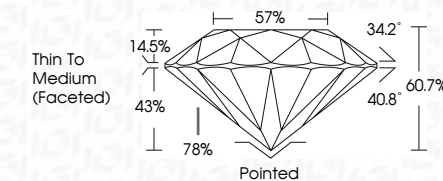
PROPORTIONS



Sample Image Used



October 14, 2024
IGI Report Number **LG659450109**
Description **LABORATORY GROWN DIAMOND**
Shape and Cutting Style **ROUND BRILLIANT**
Measurements **8.54 - 8.56 X 5.19 MM**
GRADING RESULTS
Carat Weight **2.31 CARATS**
Color Grade **E**
Clarity Grade **VVS 2**
Cut Grade **IDEAL**



ADDITIONAL GRADING INFORMATION

Polish **EXCELLENT**
Symmetry **EXCELLENT**
Fluorescence **NONE**
Inscription(s) **IGI LG659450109**
Comments: HEARTS & ARROWS
This Laboratory Grown Diamond was created by Chemical Vapor Deposition (CVD) growth process. Type IIa



IGI



© IGI 2020, International Gemological Institute FD - 10 20

THIS DOCUMENT WAS PRODUCED WITH THE FOLLOWING SECURITY MEASURES: SPECIAL DOCUMENT PAPER, INK SCREENS, WATERMARK, BACKGROUND DESIGNS, HOLOGRAM AND OTHER SECURITY FEATURES NOT LISTED AND DO EXCEED DOCUMENT SECURITY INDUSTRY GUIDELINES.

www.igi.org

October 14, 2024
IGI Report No **LG659450109**
ROUND BRILLIANT
8.54 - 8.56 X 5.19 MM
Carat Weight **2.31 CARATS**
Color Grade **E**
Clarity Grade **VVS 2**
Cut Grade **IDEAL**
Depth **60.7%**
Table **57%**
Girdle **Thin To Medium (Faceted)**
Culet **Pointed**
Polish **EXCELLENT**
Symmetry **EXCELLENT**
Fluorescence **NONE**
Inscription(s) **IGI LG659450109**
Comments: **HEARTS & ARROWS**
This Laboratory Grown Diamond was created by Chemical Vapor Deposition (CVD) growth process. Type IIa