



ELECTRONIC COPY

LABORATORY GROWN DIAMOND REPORT

October 14, 2024
IGI Report Number LG659453616
Description LABORATORY GROWN DIAMOND
Shape and Cutting Style ROUND BRILLIANT
Measurements 6.45 - 6.48 X 3.93 MM

GRADING RESULTS

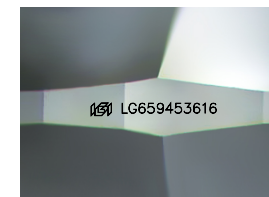
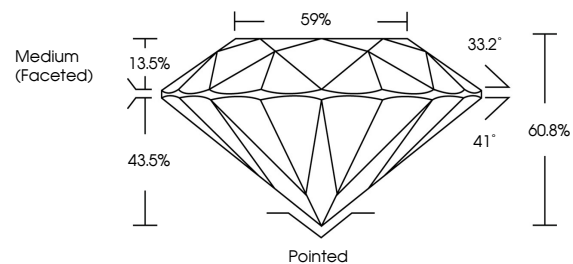
Carat Weight 1.01 CARAT
Color Grade D
Clarity Grade VVS 1
Cut Grade IDEAL

ADDITIONAL GRADING INFORMATION

Polish EXCELLENT
Symmetry EXCELLENT
Fluorescence NONE
Inscription(s) IGI LG659453616

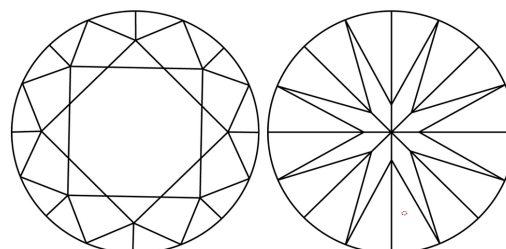
Comments: This Laboratory Grown Diamond was created by Chemical Vapor Deposition (CVD) growth process.
Type IIa

PROPORTIONS



Sample Image Used

CLARITY CHARACTERISTICS



KEY TO SYMBOLS

Red symbols indicate internal characteristics.
Green symbols indicate external characteristics.

COLOR

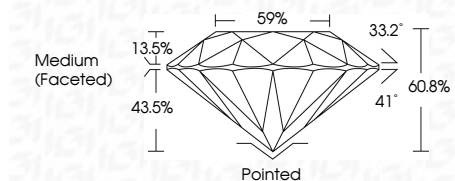
D E F G H I J Faint Very Light Light

CLARITY

IF VS 1-2 VS 1-2 SI 1-2 I 1-3
Internally Flawless Very Very Slightly Included Very Slightly Included Slightly Included Included



October 14, 2024
IGI Report Number LG659453616
Description LABORATORY GROWN DIAMOND
Shape and Cutting Style ROUND BRILLIANT
Measurements 6.45 - 6.48 X 3.93 MM
GRADING RESULTS
Carat Weight 1.01 CARAT
Color Grade D
Clarity Grade VVS 1
Cut Grade IDEAL



ADDITIONAL GRADING INFORMATION

Polish EXCELLENT
Symmetry EXCELLENT
Fluorescence NONE
Inscription(s) IGI LG659453616
Comments: This Laboratory Grown Diamond was created by Chemical Vapor Deposition (CVD) growth process.
Type IIa



IGI



Table with 2 columns: Property and Value. Properties include Date, Report No, Shape, Measurements, Carat Weight, Color Grade, Clarity Grade, Depth, Table, Girdle, Cutlet, Polish, Symmetry, Fluorescence, and Inscription(s). Values include 1.01 CARAT, D, VVS 1, IDEAL, 60.8%, 59%, EXCELLENT, EXCELLENT, NONE, and IGI LG659453616.

Comments: This Laboratory Grown Diamond was created by Chemical Vapor Deposition (CVD) growth process.
Type IIa