



**ELECTRONIC COPY**

## LABORATORY GROWN DIAMOND REPORT

October 14, 2024	
IGI Report Number	LG659455433
Description	LABORATORY GROWN DIAMOND
Shape and Cutting Style	CUT CORNERED RECTANGULAR MODIFIED BRILLIANT
Measurements	8.88 X 6.12 X 4.22 MM

## GRADING RESULTS

Carat Weight	1.98 CARAT
Color Grade	H
Clarity Grade	VVS 2

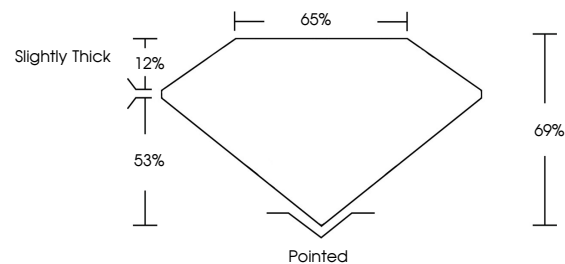
### ADDITIONAL GRADING INFORMATION

Polish	EXCELLENT
Symmetry	EXCELLENT
Fluorescence	NONE
Inscription(s)	 LG659455433

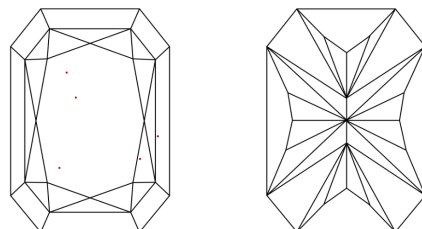
Comments: This Laboratory Grown Diamond was created by Chemical Vapor Deposition (CVD) growth process.  
Type IIa

LG659455433  
Report verification at [igi.org](https://igi.org)

## PROPORTIONS

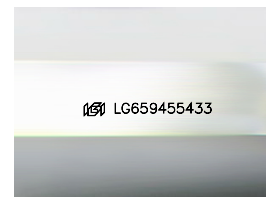


## CLARITY CHARACTERISTICS



## KEY TO SYMBOLS

Red symbols indicate internal characteristics.  
Green symbols indicate external characteristics.



Sample Image Used

**COLOR**

D E F G H I J Faint Very Light Light

## CLARITY

IF	VVS <sup>1-2</sup>	VS <sup>1-2</sup>	SI <sup>1-2</sup>	I <sup>1-3</sup>
Internally Flawless	Very Very Slightly Included	Very Slightly Included	Slightly Included	Included



© IGI 2020, International Gemological Institute

FD - 10 20

**www.igi.org**

## LABORATORY GROWN DIAMOND REPORT

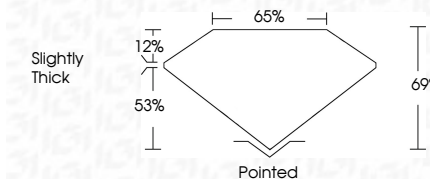


October 14, 2024	
IGI Report Number	LG659455433
Description	LABORATORY GROWN DIAMOND
Shape and Cutting Style	CUT CORNERED RECTANGULAR MODIFIED BRILLIANT

Measurements **8.88 X 6.12 X 4.22 MM**

## GRADING RESULTS

Carat Weight	1.98 CARAT
Color Grade	H
Clarity Grade	VVS 2



### ADDITIONAL GRADING INFORMATION

Polish	EXCELLENT
Symmetry	EXCELLENT
Fluorescence	NONE
Inscription(s)	 LG659455433

Comments: This Laboratory Grown Diamond was created by Chemical Vapor Deposition (CVD) growth process.  
Type IIa



October 14, 2024	GI Report No LG56945433
CUT CORNERED RECT. MODIFIED BRILLIANT	
8.88 X 6.12 X 4.22 MM	1.96 CARAT
Color Grade	H
Clarity Grade	VVS 2
Depth	67%
Table	65%
Grade	Slightly Thick
Culet	Pointed
Polish	EXCELLENT
Symmetry	EXCELLENT
Fluor. essence	NONE
Inscriptions(s)	681 LG56945433
Comments: Very Green Diamond was treated by Chemical Vapor Deposition (CVD) growth process.	
Type IIa	