



ELECTRONIC COPY

LABORATORY GROWN DIAMOND REPORT

October 14, 2024	
IGI Report Number	LG659456165
Description	LABORATORY GROWN DIAMOND
Shape and Cutting Style	CUT CORNERED RECTANGULAR MODIFIED BRILLIANT
Measurements	8.97 X 6.32 X 4.31 MM

GRADING RESULTS

Carat Weight	2.10 CARATS
Color Grade	G
Clarity Grade	VVS 2

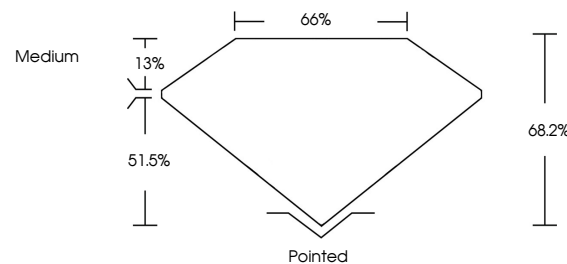
ADDITIONAL GRADING INFORMATION

Polish	EXCELLENT
Symmetry	EXCELLENT
Fluorescence	NONE
Inscription(s)	15 LG659456165

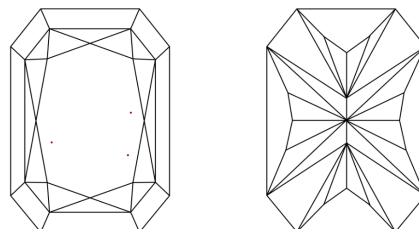
Comments: This Laboratory Grown Diamond was created by Chemical Vapor Deposition (CVD) growth process.
Type IIa

LG659456165
Report verification at lgi.org

PROPORTIONS

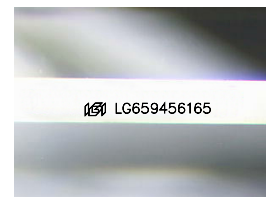


CLARITY CHARACTERISTICS



KEY TO SYMBOLS

Red symbols indicate internal characteristics.
Green symbols indicate external characteristics.



Sample Image Used

COLOR

D E F G H I J Faint Very Light Light

CLARITY

IF	VVS ¹⁻²	VS ¹⁻²	SI ¹⁻²	I ¹⁻³
Internally Flawless	Very Very Slightly Included	Very Slightly Included	Slightly Included	Included



© IGI 2020, International Gemological Institute

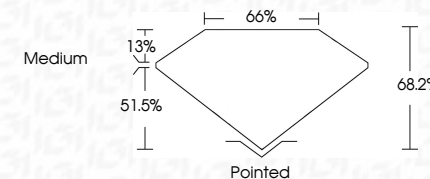
FD - 10 20

www.igi.org

LABORATORY GROWN DIAMOND REPORT



October 14, 2024	
IGI Report Number	LG659456165
Description	LABORATORY GROWN DIAMOND
Shape and Cutting Style	CUT CORNERED RECTANGULAR MODIFIED BRILLIANT
Measurements	8.97 X 6.32 X 4.31 MM
GRADING RESULTS	
Carat Weight	2.10 CARATS
Color Grade	G
Clarity Grade	VVS 2



ADDITIONAL GRADING INFORMATION

Polish	EXCELLENT
Symmetry	EXCELLENT
Fluorescence	NONE
Inscription(s)	 LG659456165
<p>Comments: This Laboratory Grown Diamond was created by Chemical Vapor Deposition (CVD) growth process.</p> <p>Type IIa</p>	



October 14, 2024	
GJ REPORT NO LG59456165	
CU CORNERED RECT. MODIFIED BRILLIANT	
	2.10 CARATS
	G
	VVS 2
	68.2%
	65%
	Medium
	Pointed
	EXCELLENT
	EXCELLENT
	NONE
	(#) LG59456165

Comments:

The Laboratory Grown Diamond was
 analyzed by Laser Assisted Vapor Deposition
 (LAVD) growth process.
 type IIG