



ELECTRONIC COPY

LG659457849
Report verification at igi.org



October 15, 2024

IGI Report Number LG659457849

Description LABORATORY GROWN DIAMOND

Shape and Cutting Style ROUND BRILLIANT

Measurements 6.51 - 6.54 X 4.04 MM

GRADING RESULTS

Carat Weight 1.06 CARAT

Color Grade E

Clarity Grade VVS 1

Cut Grade IDEAL

October 15, 2024

IGI Report Number LG659457849

Description LABORATORY GROWN DIAMOND

Shape and Cutting Style ROUND BRILLIANT

Measurements 6.51 - 6.54 X 4.04 MM

GRADING RESULTS

Carat Weight 1.06 CARAT

Color Grade E

Clarity Grade VVS 1

Cut Grade IDEAL

ADDITIONAL GRADING INFORMATION

Polish EXCELLENT

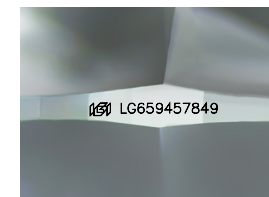
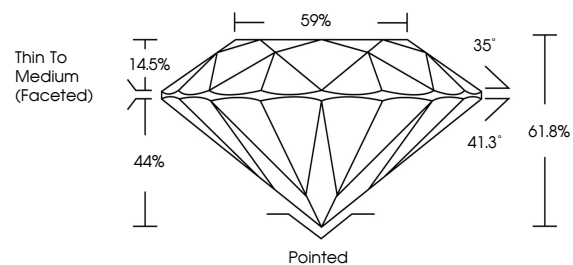
Symmetry EXCELLENT

Fluorescence NONE

Inscription(s) IGI LG659457849

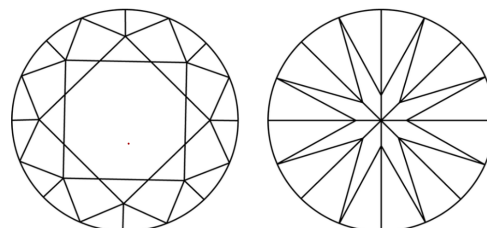
Comments: This Laboratory Grown Diamond was created by Chemical Vapor Deposition (CVD) growth process. Type IIa

PROPORTIONS



Sample Image Used

CLARITY CHARACTERISTICS



KEY TO SYMBOLS

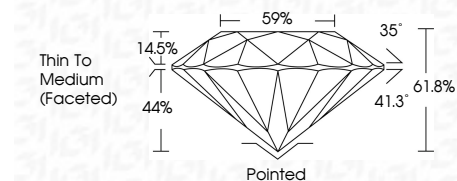
Red symbols indicate internal characteristics. Green symbols indicate external characteristics.

COLOR

D E F G H I J Faint Very Light Light

CLARITY

IF VVS 1-2 VS 1-2 SI 1-2 I 1-3 Internally Flawless Very Very Slightly Included Very Slightly Included Slightly Included Included



ADDITIONAL GRADING INFORMATION

Polish EXCELLENT

Symmetry EXCELLENT

Fluorescence NONE

Inscription(s) IGI LG659457849

Comments: This Laboratory Grown Diamond was created by Chemical Vapor Deposition (CVD) growth process. Type IIa



Table with 2 columns: Property and Value. Includes: October 15, 2024, IGI Report No LG659457849, ROUND BRILLIANT, 6.51 - 6.54 X 4.04 MM, 1.06 CARAT, E, VVS 1, IDEAL, 61.8%, 59%, Thin To Medium (Faceted), Pointed, EXCELLENT, EXCELLENT, NONE, IGI LG659457849, Comments: This Laboratory Grown Diamond was created by Chemical Vapor Deposition (CVD) growth process. Type IIa