



**ELECTRONIC COPY**

LG659464419  
Report verification at igi.org



October 15, 2024

IGI Report Number **LG659464419**

Description **LABORATORY GROWN DIAMOND**

Shape and Cutting Style **EMERALD CUT**

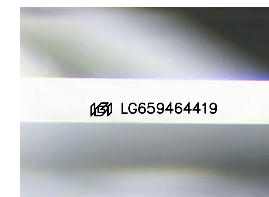
Measurements **8.40 X 6.07 X 4.14 MM**

**GRADING RESULTS**

Carat Weight **2.13 CARATS**

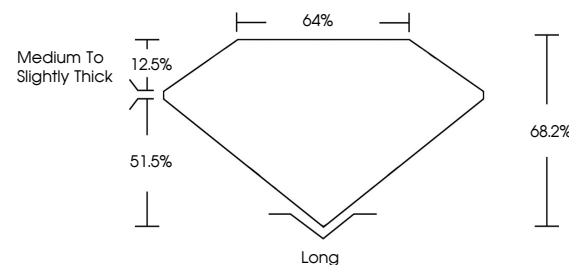
Color Grade **D**

Clarity Grade **VS 2**

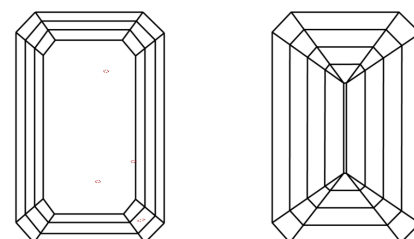


Sample Image Used

**PROPORTIONS**



**CLARITY CHARACTERISTICS**



**KEY TO SYMBOLS**

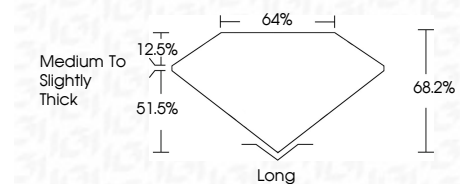
Red symbols indicate internal characteristics.  
Green symbols indicate external characteristics.

**COLOR**

D E F G H I J Faint Very Light Light

**CLARITY**

IF	VS <sup>1-2</sup>	VS <sup>1-2</sup>	SI <sup>1-2</sup>	I <sup>1-3</sup>
Internally Flawless	Very Very Slightly Included	Very Slightly Included	Slightly Included	Included



**ADDITIONAL GRADING INFORMATION**

Polish **EXCELLENT**

Symmetry **EXCELLENT**

Fluorescence **NONE**

Inscription(s) **IGI LG659464419**

Comments: This Laboratory Grown Diamond was created by Chemical Vapor Deposition (CVD) growth process. Type IIa



**IGI**



October 15, 2024  
IGI Report No. LG659464419  
**EMERALD CUT**

**2.13 CARATS**  
D

8.40 X 6.07 X 4.14 MM  
Color Grade **D**  
Clarity Grade **VS 2**  
Table **64%**  
Crown **12.5%**  
Pavilion **51.5%**  
Girdle **Medium to Slightly Thick**

Culet **Long**  
Polish **EXCELLENT**  
Symmetry **EXCELLENT**  
Fluorescence **NONE**  
Inscription(s) **IGI LG659464419**

Comments: This Laboratory Grown Diamond was created by Chemical Vapor Deposition (CVD) growth process. Type IIa