



ELECTRONIC COPY

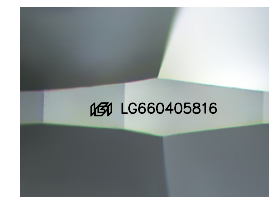
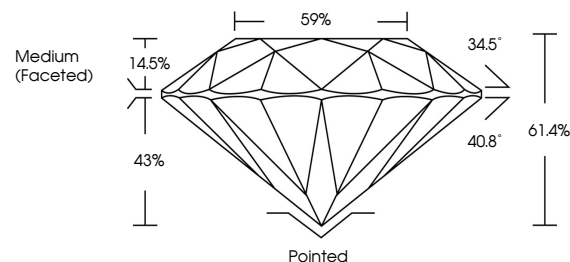
LG660405816 Report verification at igi.org



October 16, 2024 IGI Report Number LG660405816 Description LABORATORY GROWN DIAMOND Shape and Cutting Style ROUND BRILLIANT Measurements 7.33 - 7.37 X 4.51 MM GRADING RESULTS Carat Weight 1.51 CARAT Color Grade D Clarity Grade INTERNALLY FLAWLESS Cut Grade IDEAL

October 16, 2024 IGI Report Number LG660405816 Description LABORATORY GROWN DIAMOND Shape and Cutting Style ROUND BRILLIANT Measurements 7.33 - 7.37 X 4.51 MM

PROPORTIONS

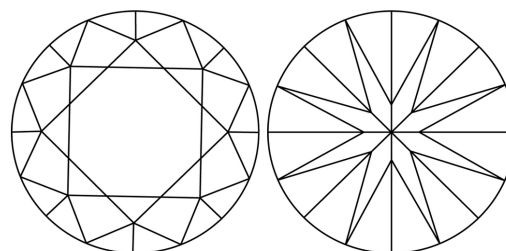


Sample Image Used

GRADING RESULTS

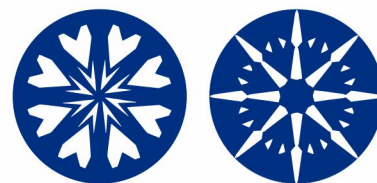
Carat Weight 1.51 CARAT Color Grade D Clarity Grade INTERNALLY FLAWLESS Cut Grade IDEAL

CLARITY CHARACTERISTICS



KEY TO SYMBOLS

Red symbols indicate internal characteristics. Green symbols indicate external characteristics.



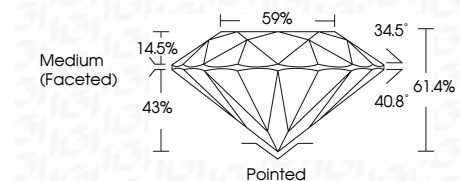
www.igi.org

COLOR

D E F G H I J Faint Very Light Light

CLARITY

IF VS 1-2 VS 1-2 SI 1-2 I 1-3 Internally Flawless Very Very Slightly Included Very Slightly Included Slightly Included Included



ADDITIONAL GRADING INFORMATION

Polish EXCELLENT Symmetry EXCELLENT Fluorescence NONE Inscription(s) LG660405816 Comments: HEARTS & ARROWS As Grown - No indication of post-growth treatment. This Laboratory Grown Diamond was created by High Pressure High Temperature (HPHT) growth process. Type II



IGI



October 16, 2024 IGI Report No LG660405816 ROUND BRILLIANT 7.33 - 7.37 X 4.51 MM 1.51 CARAT D Color Grade D IF IDEAL 61.4% 59% Medium (Faceted) Pointed EXCELLENT EXCELLENT NONE NONE LG660405816

Comments: HEARTS & ARROWS As Grown - No indication of post-growth treatment. This Laboratory Grown Diamond was created by High Pressure High Temperature (HPHT) growth process. Type II