



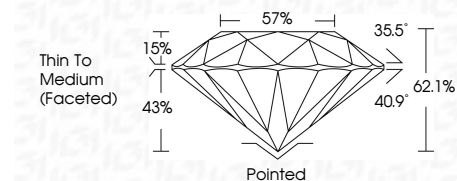
ELECTRONIC COPY

LG660421243 Report verification at igi.org



October 15, 2024 IGI Report Number LG660421243 Description LABORATORY GROWN DIAMOND Shape and Cutting Style ROUND BRILLIANT Measurements 7.67 - 7.71 X 4.77 MM

GRADING RESULTS Carat Weight 1.73 CARAT Color Grade D Clarity Grade VVS 2 Cut Grade IDEAL



ADDITIONAL GRADING INFORMATION Polish EXCELLENT Symmetry EXCELLENT Fluorescence NONE Inscription(s) IGI LG660421243 Comments: As Grown - No indication of post-growth treatment. This Laboratory Grown Diamond was created by High Pressure High Temperature (HPHT) growth process. Type II



October 15, 2024 IGI Report No LG660421243 ROUND BRILLIANT 7.67 - 7.71 X 4.77 MM 1.73 CARAT D VVS 2 IDEAL 62.1% 57% Thin To Medium (Faceted) Pointed EXCELLENT EXCELLENT NONE IGI LG660421243 Comments: As Grown - No indication of post-growth treatment. This Laboratory Grown Diamond was created by High Pressure High Temperature (HPHT) growth process. Type II

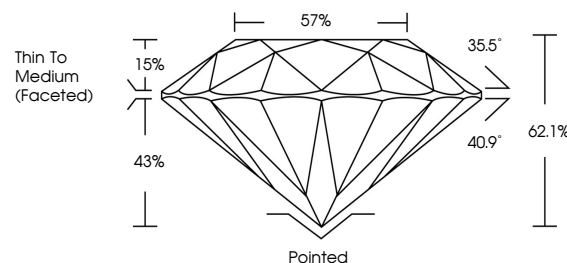
October 15, 2024 IGI Report Number LG660421243 Description LABORATORY GROWN DIAMOND Shape and Cutting Style ROUND BRILLIANT Measurements 7.67 - 7.71 X 4.77 MM

GRADING RESULTS Carat Weight 1.73 CARAT Color Grade D Clarity Grade VVS 2 Cut Grade IDEAL

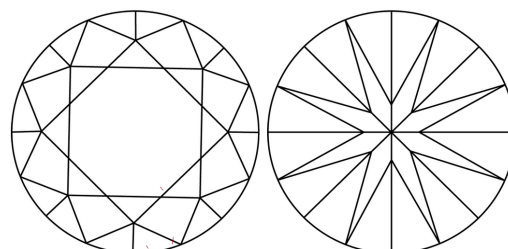
ADDITIONAL GRADING INFORMATION Polish EXCELLENT Symmetry EXCELLENT Fluorescence NONE Inscription(s) IGI LG660421243

Comments: As Grown - No indication of post-growth treatment. This Laboratory Grown Diamond was created by High Pressure High Temperature (HPHT) growth process. Type II

PROPORTIONS



CLARITY CHARACTERISTICS



KEY TO SYMBOLS

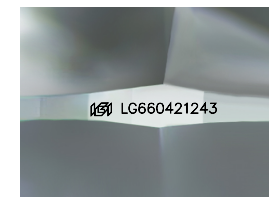
Red symbols indicate internal characteristics. Green symbols indicate external characteristics.

COLOR

D E F G H I J Faint Very Light Light

CLARITY

IF VVS 1-2 VS 1-2 SI 1-2 I 1-3 Internally Flawless Very Very Slightly Included Very Slightly Included Slightly Included Included



Sample Image Used

