



ELECTRONIC COPY

LABORATORY GROWN DIAMOND REPORT

October 18, 2024  
IGI Report Number LG660421569  
Description LABORATORY GROWN DIAMOND  
Shape and Cutting Style CUT CORNERED RECTANGULAR MODIFIED BRILLIANT  
Measurements 7.20 X 4.88 X 3.33 MM

GRADING RESULTS

Carat Weight 1.00 CARAT  
Color Grade E  
Clarity Grade SI 1

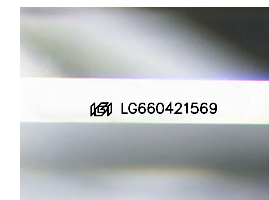
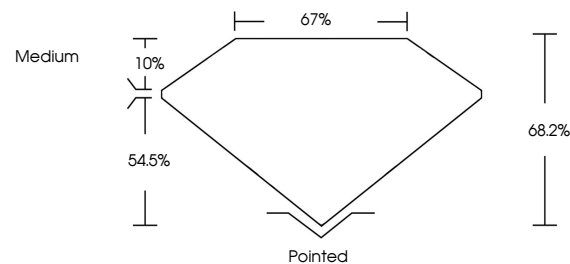
ADDITIONAL GRADING INFORMATION

Polish EXCELLENT  
Symmetry EXCELLENT  
Fluorescence NONE

Inscription(s) LG660421569

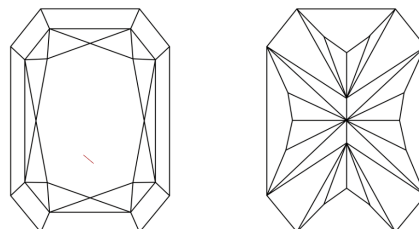
Comments: This Laboratory Grown Diamond was created by Chemical Vapor Deposition (CVD) growth process.  
Type IIa

PROPORTIONS



Sample Image Used

CLARITY CHARACTERISTICS



KEY TO SYMBOLS

Red symbols indicate internal characteristics.  
Green symbols indicate external characteristics.

COLOR

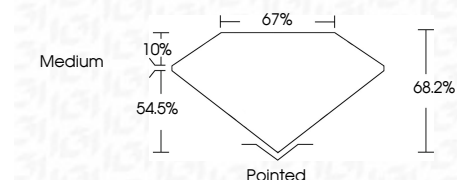
D E F G H I J Faint Very Light Light

CLARITY

IF	VS <sup>1-2</sup>	VS <sup>1-2</sup>	SI <sup>1-2</sup>	I <sup>1-3</sup>
Internally Flawless	Very Very Slightly Included	Very Slightly Included	Slightly Included	Included



October 18, 2024  
IGI Report Number LG660421569  
Description LABORATORY GROWN DIAMOND  
Shape and Cutting Style CUT CORNERED RECTANGULAR MODIFIED BRILLIANT  
Measurements 7.20 X 4.88 X 3.33 MM  
GRADING RESULTS  
Carat Weight 1.00 CARAT  
Color Grade E  
Clarity Grade SI 1



ADDITIONAL GRADING INFORMATION

Polish EXCELLENT  
Symmetry EXCELLENT  
Fluorescence NONE  
Inscription(s) LG660421569

Comments: This Laboratory Grown Diamond was created by Chemical Vapor Deposition (CVD) growth process.  
Type IIa



October 18, 2024  
IGI Report No. LG660421569  
CUT CORNERED RECT. MODIFIED BRILLIANT

7.20 X 4.88 X 3.33 MM

Carat Weight 1.00 CARAT  
Color Grade E  
Clarity Grade SI 1  
Depth 68.2%  
Table 67%  
Girdle Medium  
Culet Pointed  
Polish EXCELLENT  
Symmetry EXCELLENT  
Fluorescence NONE  
Inscription(s) LG660421569

Comments: This Laboratory Grown Diamond was created by Chemical Vapor Deposition (CVD) growth process.  
Type IIa