



**ELECTRONIC COPY**

## LABORATORY GROWN DIAMOND REPORT

October 18, 2024	
IGI Report Number	LG660423937
Description	LABORATORY GROWN DIAMOND
Shape and Cutting Style	SQUARE EMERALD CUT
Measurements	8.93 X 8.85 X 5.72 MM

## GRADING RESULTS

Carat Weight	4.09 CARATS
Color Grade	G
Clarity Grade	VS 2

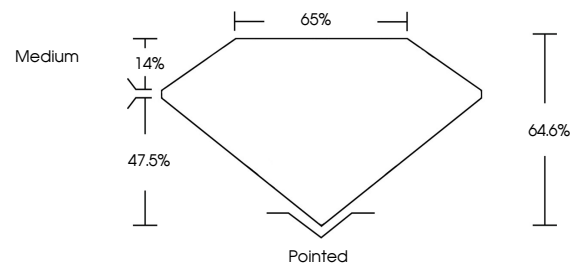
### ADDITIONAL GRADING INFORMATION

Polish	EXCELLENT
Symmetry	EXCELLENT
Fluorescence	NONE
Inscription(s)	 LG660423937

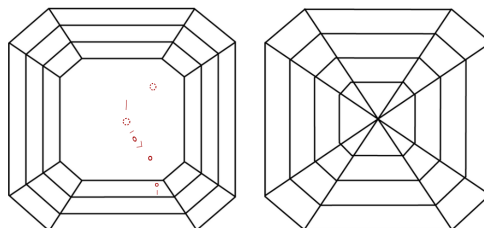
Comments: This Laboratory Grown Diamond was created by Chemical Vapor Deposition (CVD) growth process.  
Type IIa

LG660423937  
Report verification at [igi.org](https://igi.org)

## PROPORTIONS

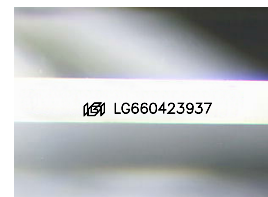


## CLARITY CHARACTERISTICS



## KEY TO SYMBOLS

Red symbols indicate internal characteristics.  
Green symbols indicate external characteristics.



Sample Image Used

**COLOR**

D E F G H I J Faint Very Light Light

## CLARITY

IF	VVS <sup>1-2</sup>	VS <sup>1-2</sup>	SI <sup>1-2</sup>	I <sup>1-3</sup>
Internally Flawless	Very Very Slightly Included	Very Slightly Included	Slightly Included	Included



© IGI 2020, International Gemological Institute

FD - 10 20

**www.igi.org**

## LABORATORY GROWN DIAMOND REPORT



October 18, 2024	
IGI Report Number	LG660423937
Description	LABORATORY GROWN DIAMOND
Shape and Cutting Style	SQUARE EMERALD CUT
Measurements	8.93 X 8.85 X 5.72 MM

## GRADING RESULTS

Carat Weight	4.09 CARATS
Color Grade	G
Clarity Grade	VS 2

### ADDITIONAL GRADING INFORMATION

Polish	EXCELLENT
Symmetry	EXCELLENT
Fluorescence	NONE
Inscription(s)	 LG660423937

Comments: This Laboratory Grown Diamond was created by Chemical Vapor Deposition (CVD) growth process.  
Type IIa



October 18, 2024  
IGI Report No LG660423937  
SQUARE EMERALD CUT

8.93 X 8.95 X 5.72 MM	4.09 CARATS
Carat Weight	G
Color Grade	Vs 2
Clarity Grade	64.6%
Depth	65%
Table	Medium
Girdle	Pointed
Culet	EXCELLENT
Polish	EXCELLENT
Symmetry	NONE
Fluorescence	None
Inspection(s)	10/21/2016 10:03:27

**Comments:**  
This Laboratory Grown Diamond was created by Chemical Vapor Deposition (CVD) growth process.