



ELECTRONIC COPY

LABORATORY GROWN DIAMOND REPORT

November 16, 2024
IGI Report Number **LG660435174**
Description **LABORATORY GROWN DIAMOND**
Shape and Cutting Style **CUT CORNERED RECTANGULAR MODIFIED BRILLIANT**
Measurements **7.71 X 5.48 X 3.77 MM**

GRADING RESULTS

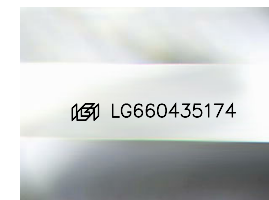
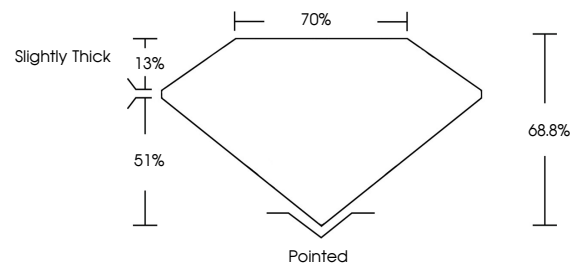
Carat Weight **1.52 CARAT**
Color Grade **FANCY INTENSE YELLOW**
Clarity Grade **SI 1**

ADDITIONAL GRADING INFORMATION

Polish **EXCELLENT**
Symmetry **EXCELLENT**
Fluorescence **NONE**
Inscription(s) **IGI LG660435174**

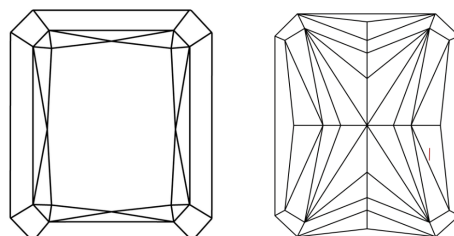
Comments: This Laboratory Grown Diamond was created by Chemical Vapor Deposition (CVD) growth process.

PROPORTIONS



Sample Image Used

CLARITY CHARACTERISTICS



KEY TO SYMBOLS

Red symbols indicate internal characteristics.
Green symbols indicate external characteristics.

COLOR

D E F G H I J Faint Very Light Light

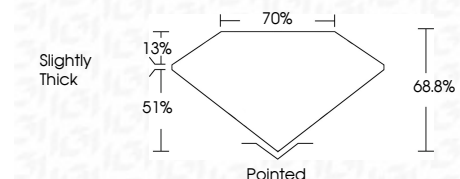
CLARITY

IF VS¹⁻² VS¹⁻² SI¹⁻² I¹⁻³

Internally Flawless Very Very Slightly Included Very Slightly Included Slightly Included Included



November 16, 2024
IGI Report Number **LG660435174**
Description **LABORATORY GROWN DIAMOND**
Shape and Cutting Style **CUT CORNERED RECTANGULAR MODIFIED BRILLIANT**
Measurements **7.71 X 5.48 X 3.77 MM**
GRADING RESULTS
Carat Weight **1.52 CARAT**
Color Grade **FANCY INTENSE YELLOW**
Clarity Grade **SI 1**



ADDITIONAL GRADING INFORMATION

Polish **EXCELLENT**
Symmetry **EXCELLENT**
Fluorescence **NONE**
Inscription(s) **IGI LG660435174**
Comments: This Laboratory Grown Diamond was created by Chemical Vapor Deposition (CVD) growth process.



IGI



November 16, 2024
IGI Report No. **LG660435174**
CUT CORNERED RECT. MODIFIED BRILLIANT
7.71 X 5.48 X 3.77 MM
Carat Weight **1.52 CARAT**
Color Grade **FANCY INTENSE YELLOW**
Clarity Grade **SI 1**
Depth **68.8%**
Table **70%**
Girdle **Slightly Thick**
Culet **Pointed**
Polish **EXCELLENT**
Symmetry **EXCELLENT**
Fluorescence **NONE**
Inscription(s) **IGI LG660435174**

Comments: This Laboratory Grown Diamond was created by Chemical Vapor Deposition (CVD) growth process.