



**ELECTRONIC COPY**

LG660436445  
Report verification at igi.org



October 17, 2024

IGI Report Number **LG660436445**

Description **LABORATORY GROWN DIAMOND**

Shape and Cutting Style **EMERALD CUT**

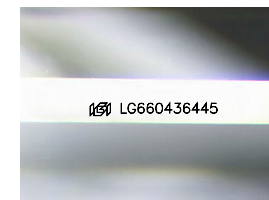
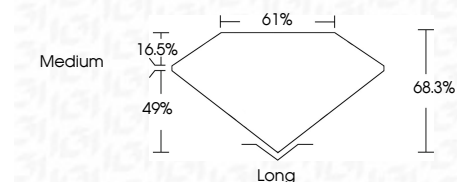
Measurements **9.75 X 6.25 X 4.27 MM**

**GRADING RESULTS**

Carat Weight **2.74 CARATS**

Color Grade **E**

Clarity Grade **VVS 1**



Sample Image Used

**ADDITIONAL GRADING INFORMATION**

Polish **EXCELLENT**

Symmetry **EXCELLENT**

Fluorescence **NONE**

Inscription(s) **IGI LG660436445**

Comments: This Laboratory Grown Diamond was created by Chemical Vapor Deposition (CVD) growth process.  
Type IIa



October 17, 2024	IGI Report No. LG660436445	2.74 CARATS	E	VVS 1	68.3%	61%	Medium	Long	EXCELLENT	EXCELLENT	NONE	IGI LG660436445
EMERALD CUT	9.75 X 6.25 X 4.27 MM	Color Grade	Depth	Table	Graile	Cutlet	Polish	Symmetry	Fluorescence	Inscription(s)		

Comments: This Laboratory Grown Diamond was created by Chemical Vapor Deposition (CVD) growth process.  
Type IIa

October 17, 2024

IGI Report Number **LG660436445**

Description **LABORATORY GROWN DIAMOND**

Shape and Cutting Style **EMERALD CUT**

Measurements **9.75 X 6.25 X 4.27 MM**

**GRADING RESULTS**

Carat Weight **2.74 CARATS**

Color Grade **E**

Clarity Grade **VVS 1**

**ADDITIONAL GRADING INFORMATION**

Polish **EXCELLENT**

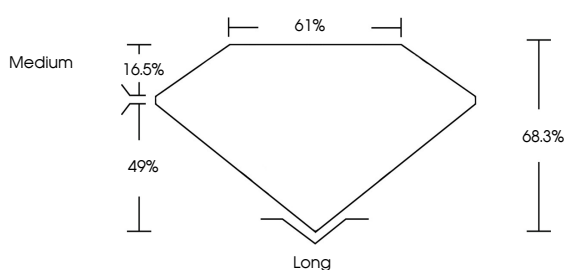
Symmetry **EXCELLENT**

Fluorescence **NONE**

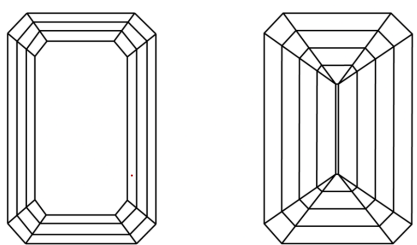
Inscription(s) **IGI LG660436445**

Comments: This Laboratory Grown Diamond was created by Chemical Vapor Deposition (CVD) growth process.  
Type IIa

**PROPORTIONS**



**CLARITY CHARACTERISTICS**



**KEY TO SYMBOLS**

Red symbols indicate internal characteristics.  
Green symbols indicate external characteristics.

**COLOR**

D	E	F	G	H	I	J	Faint	Very Light	Light
---	---	---	---	---	---	---	-------	------------	-------

**CLARITY**

IF	VS <sup>1-2</sup>	VS <sup>1-2</sup>	SI <sup>1-2</sup>	I <sup>1-3</sup>
Internally Flawless	Very Very Slightly Included	Very Slightly Included	Slightly Included	Included

