



**ELECTRONIC COPY**

## LABORATORY GROWN DIAMOND REPORT

October 17, 2024	
IGI Report Number	LG660439115
Description	LABORATORY GROWN DIAMOND
Shape and Cutting Style	EMERALD CUT
Measurements	8.41 X 6.25 X 4.19 MM

## GRADING RESULTS

Carat Weight	2.18 CARATS
Color Grade	G
Clarity Grade	VVS 2

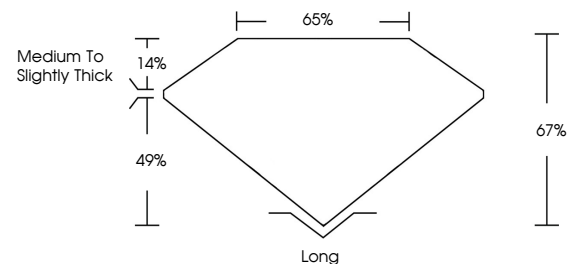
### ADDITIONAL GRADING INFORMATION

Polish	EXCELLENT
Symmetry	EXCELLENT
Fluorescence	NONE
Inscription(s)	 LG660439115

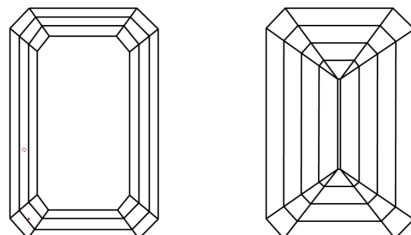
Comments: This Laboratory Grown Diamond was created by Chemical Vapor Deposition (CVD) growth process.  
Type IIa

LG660439115  
Report verification at [igi.org](https://igi.org)

## PROPORTIONS

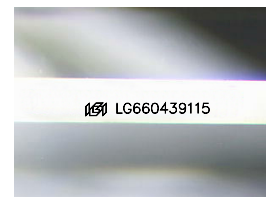


## CLARITY CHARACTERISTICS



### KEY TO SYMBOLS

Red symbols indicate internal characteristics.  
Green symbols indicate external characteristics.



Sample Image Used

## COLOR

D E F G H I J Faint Very Light Light

## CLARITY

IF	VVS <sup>1,2</sup>	VS <sup>1,2</sup>	SI <sup>1,2</sup>	I <sup>1,3</sup>
Internally Flawless	Very Very Slightly Included	Very Slightly Included	Slightly Included	Included



© IGI 2020, International Gemological Institute

FD - 10 20

LABORATORY GROWN DIAMOND REPORT



October 17, 2024

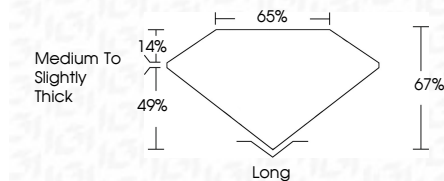
IGI Report Number **LG660439115**Description **LABORATORY GROWN DIAMOND**Shape and Cutting Style **EMERALD CUT**

Measurements **8.41 X 6.25 X 4.19 MM**

## GRADING RESULTS

Carat Weight **2.18 CARATS**

Color Grade **G**

Clarity Grade **VVS 2**

### ADDITIONAL GRADING INFORMATION

Polish EXCELLENCE

Symmetry **EXCELLENCE**

Fluorescence NONI

Inscription(s)  LG660439115

Comments: This Laboratory Grown Diamond was created by Chemical Vapor Deposition (CVD) growth process.  
Type IIa



October 17, 2024	Carat Weight	2.18 CARATS
GI Report No. G5604939115	Color Grade	G
HERAUD CUT	Clarity Grade	VVS 2
	Depth	67%
	Table	65%
	Grain	Medium To Slightly Thick
1.41 X 4.25 X 4.19 MM	Quiet	Long
	Push	EXCELLENT
	Symmetry	EXCELLENT
	Fluorescence	NONE
	Inscription(s)	#81 G5604939115

Comments:  
 The Laboratory Grown Diamond was  
 created by Chemical Vapor Deposition  
 growth process.  
 Type IIa