



ELECTRONIC COPY

LG660442924
Report verification at igi.org



November 11, 2024
IGI Report Number **LG660442924**
Description **LABORATORY GROWN DIAMOND**
Shape and Cutting Style **ROUND BRILLIANT**
Measurements **8.68 - 8.76 X 5.35 MM**
GRADING RESULTS
Carat Weight **2.50 CARATS**
Color Grade **J**
Clarity Grade **VS 1**
Cut Grade **IDEAL**

LABORATORY GROWN DIAMOND REPORT

November 11, 2024
IGI Report Number **LG660442924**
Description **LABORATORY GROWN DIAMOND**
Shape and Cutting Style **ROUND BRILLIANT**
Measurements **8.68 - 8.76 X 5.35 MM**

GRADING RESULTS

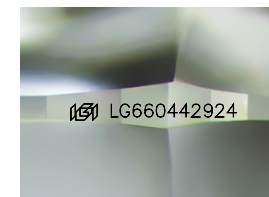
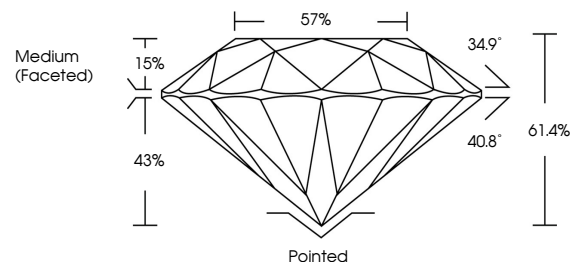
Carat Weight **2.50 CARATS**
Color Grade **J**
Clarity Grade **VS 1**
Cut Grade **IDEAL**

ADDITIONAL GRADING INFORMATION

Polish **EXCELLENT**
Symmetry **EXCELLENT**
Fluorescence **NONE**
Inscription(s) **IGI LG660442924**

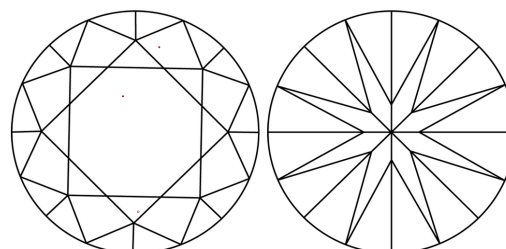
Comments: This Laboratory Grown Diamond was created by Chemical Vapor Deposition (CVD) growth process.
Type IIa

PROPORTIONS



Sample Image Used

CLARITY CHARACTERISTICS



KEY TO SYMBOLS

Red symbols indicate internal characteristics.
Green symbols indicate external characteristics.

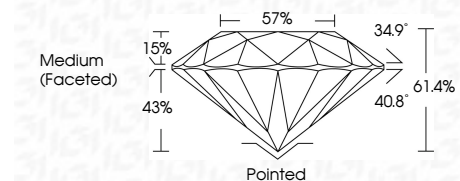
COLOR

D E F G H I J Faint Very Light Light

CLARITY

IF WS¹⁻² VS¹⁻² SI¹⁻² I¹⁻³

Internally Flawless Very Very Slightly Included Very Slightly Included Slightly Included Included



ADDITIONAL GRADING INFORMATION

Polish **EXCELLENT**
Symmetry **EXCELLENT**
Fluorescence **NONE**
Inscription(s) **IGI LG660442924**
Comments: This Laboratory Grown Diamond was created by Chemical Vapor Deposition (CVD) growth process.
Type IIa



IGI

November 11, 2024
IGI Report No **LG660442924**
ROUND BRILLIANT
8.68 - 8.76 X 5.35 MM
Carat Weight **2.50 CARATS**
Color Grade **J**
Clarity Grade **VS 1**
Cut Grade **IDEAL**
Depth **61.4%**
Table **57%**
Girdle **Medium (Faceted)**
Culet **Pointed**
Polish **EXCELLENT**
Symmetry **EXCELLENT**
Fluorescence **NONE**
Inscription(s) **IGI LG660442924**
Comments: This Laboratory Grown Diamond was created by Chemical Vapor Deposition (CVD) growth process.
Type IIa