



ELECTRONIC COPY

LG660444390
Report verification at igi.org



October 28, 2024

IGI Report Number **LG660444390**

Description **LABORATORY GROWN DIAMOND**

Shape and Cutting Style **PRINCESS CUT**

Measurements **9.23 X 9.18 X 6.69 MM**

GRADING RESULTS

Carat Weight **5.22 CARATS**

Color Grade **G**

Clarity Grade **VS 2**

October 28, 2024
IGI Report Number **LG660444390**
Description **LABORATORY GROWN DIAMOND**
Shape and Cutting Style **PRINCESS CUT**
Measurements **9.23 X 9.18 X 6.69 MM**

GRADING RESULTS

Carat Weight **5.22 CARATS**

Color Grade **G**

Clarity Grade **VS 2**

ADDITIONAL GRADING INFORMATION

Polish **EXCELLENT**

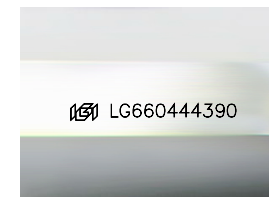
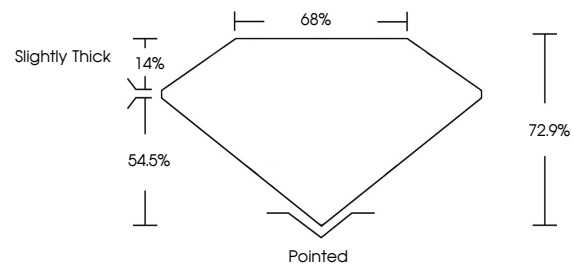
Symmetry **EXCELLENT**

Fluorescence **NONE**

Inscription(s) **LG660444390**

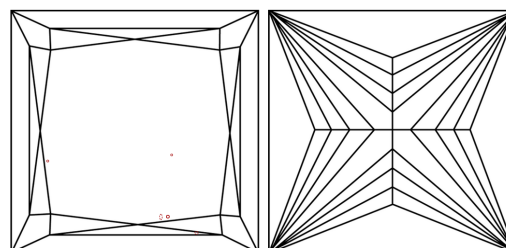
Comments: This Laboratory Grown Diamond was created by Chemical Vapor Deposition (CVD) growth process. Type IIa

PROPORTIONS



Sample Image Used

CLARITY CHARACTERISTICS



KEY TO SYMBOLS

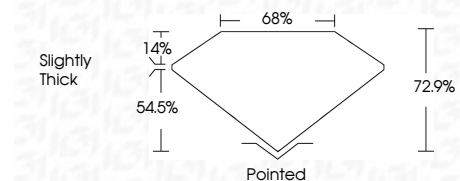
Red symbols indicate internal characteristics.
Green symbols indicate external characteristics.

COLOR

D E F G H I J Faint Very Light Light

CLARITY

IF	VS ¹⁻²	VS ¹⁻²	SI ¹⁻²	I ¹⁻³
Internally Flawless	Very Very Slightly Included	Very Slightly Included	Slightly Included	Included



ADDITIONAL GRADING INFORMATION

Polish **EXCELLENT**

Symmetry **EXCELLENT**

Fluorescence **NONE**

Inscription(s) **LG660444390**

Comments: This Laboratory Grown Diamond was created by Chemical Vapor Deposition (CVD) growth process. Type IIa



IGI



October 28, 2024
IGI Report No. **LG660444390**
PRINCESS CUT

5.22 CARATS
Carat Weight
Color Grade **G**
Clarity Grade **VS 2**
Table **14%**
Depth **54.5%**
Girdle **Slightly Thick**

Pointed
Culet
Polish **EXCELLENT**
Symmetry **EXCELLENT**
Fluorescence **NONE**
Inscription(s) **LG660444390**

Comments: This Laboratory Grown Diamond was created by Chemical Vapor Deposition (CVD) growth process. Type IIa