



ELECTRONIC COPY

LG660445619
Report verification at igi.org



October 30, 2024

IGI Report Number LG660445619

Description LABORATORY GROWN DIAMOND

Shape and Cutting Style CUT CORNERED RECTANGULAR MODIFIED BRILLIANT

Measurements 6.80 X 4.99 X 3.48 MM

GRADING RESULTS

Carat Weight 1.00 CARAT

Color Grade E

Clarity Grade VS 2

LABORATORY GROWN DIAMOND REPORT

October 30, 2024

IGI Report Number LG660445619

Description LABORATORY GROWN DIAMOND

Shape and Cutting Style CUT CORNERED RECTANGULAR MODIFIED BRILLIANT

Measurements 6.80 X 4.99 X 3.48 MM

GRADING RESULTS

Carat Weight 1.00 CARAT

Color Grade E

Clarity Grade VS 2

ADDITIONAL GRADING INFORMATION

Polish EXCELLENT

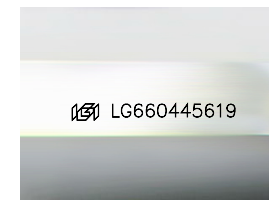
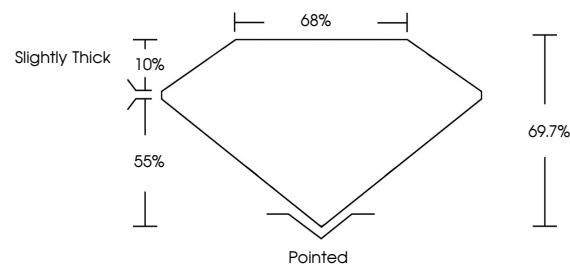
Symmetry EXCELLENT

Fluorescence NONE

Inscription(s) IGI LG660445619

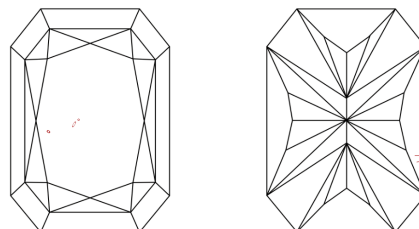
Comments: This Laboratory Grown Diamond was created by Chemical Vapor Deposition (CVD) growth process. Type IIa

PROPORTIONS



Sample Image Used

CLARITY CHARACTERISTICS



KEY TO SYMBOLS

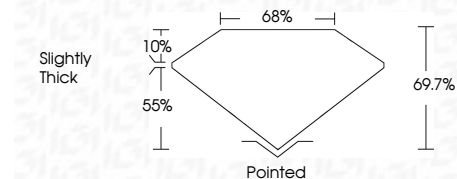
Red symbols indicate internal characteristics. Green symbols indicate external characteristics.

COLOR

D E F G H I J Faint Very Light Light

CLARITY

IF VS 1-2 VS 1-2 SI 1-2 I 1-3 Internally Flawless Very Very Slightly Included Very Slightly Included Slightly Included Included



ADDITIONAL GRADING INFORMATION

Polish EXCELLENT

Symmetry EXCELLENT

Fluorescence NONE

Inscription(s) IGI LG660445619

Comments: This Laboratory Grown Diamond was created by Chemical Vapor Deposition (CVD) growth process. Type IIa



IGI



Table with diamond details: October 30, 2024, IGI Report No. LG660445619, CUT CORNERED RECT. MODIFIED BRILLIANT, 6.80 X 4.99 X 3.48 MM, 1.00 CARAT, E, VS 2, 69.7%, 68%, Slightly Thick, Pointed, EXCELLENT, EXCELLENT, NONE, IGI LG660445619

Comments: This Laboratory Grown Diamond was created by Chemical Vapor Deposition (CVD) growth process. Type IIa