



ELECTRONIC COPY

LG660446289
Report verification at igi.org

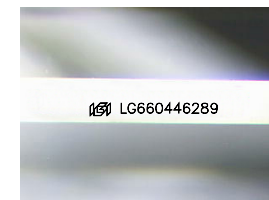


October 18, 2024
IGI Report Number **LG660446289**
Description **LABORATORY GROWN DIAMOND**

Shape and Cutting Style **PRINCESS CUT**
Measurements **9.77 X 9.57 X 6.56 MM**

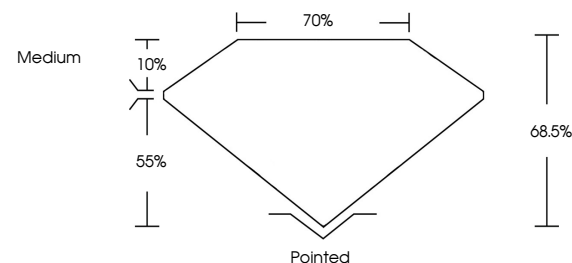
GRADING RESULTS

Carat Weight **5.48 CARATS**
Color Grade **F**
Clarity Grade **VS 2**

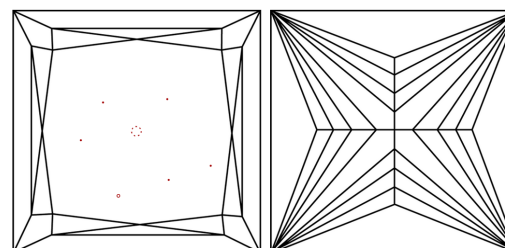


Sample Image Used

PROPORTIONS



CLARITY CHARACTERISTICS



KEY TO SYMBOLS

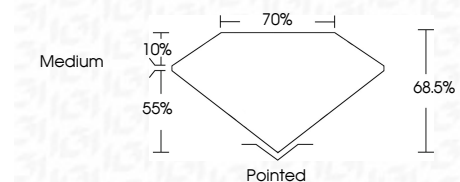
Red symbols indicate internal characteristics.
Green symbols indicate external characteristics.

COLOR

D E F G H I J Faint Very Light Light

CLARITY

IF	VS ¹⁻²	VS ¹⁻²	SI ¹⁻²	I ¹⁻³
Internally Flawless	Very Very Slightly Included	Very Slightly Included	Slightly Included	Included



ADDITIONAL GRADING INFORMATION

Polish **EXCELLENT**
Symmetry **EXCELLENT**
Fluorescence **NONE**
Inscription(s) **IGI LG660446289**

Comments: This Laboratory Grown Diamond was created by Chemical Vapor Deposition (CVD) growth process.
Type IIa



IGI



October 18, 2024
IGI Report No. **LG660446289**
PRINCESS CUT
5.48 CARATS
Color Grade **F**
Clarity Grade **VS 2**
Depth **68.5%**
Table **70%**
Girdle **Medium**
Culet **Pointed**
Polish **EXCELLENT**
Symmetry **EXCELLENT**
Fluorescence **NONE**
Inscription(s) **IGI LG660446289**
Comments: This Laboratory Grown Diamond was created by Chemical Vapor Deposition (CVD) growth process.
Type IIa