



ELECTRONIC COPY

LG660446316 Report verification at igi.org



October 18, 2024 IGI Report Number LG660446316 Description LABORATORY GROWN DIAMOND Shape and Cutting Style ROUND BRILLIANT Measurements 7.37 - 7.41 X 4.55 MM GRADING RESULTS Carat Weight 1.53 CARAT Color Grade D Clarity Grade INTERNALLY FLAWLESS Cut Grade IDEAL

October 18, 2024 IGI Report Number LG660446316 Description LABORATORY GROWN DIAMOND Shape and Cutting Style ROUND BRILLIANT Measurements 7.37 - 7.41 X 4.55 MM

GRADING RESULTS

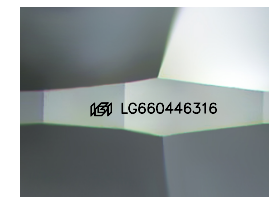
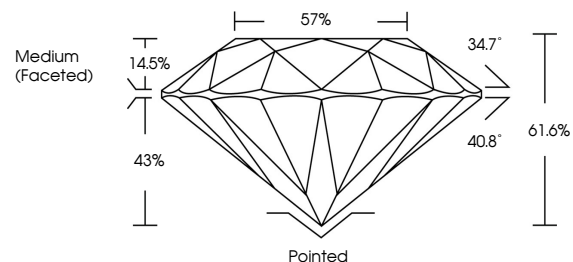
Carat Weight 1.53 CARAT Color Grade D Clarity Grade INTERNALLY FLAWLESS Cut Grade IDEAL

ADDITIONAL GRADING INFORMATION

Polish EXCELLENT Symmetry EXCELLENT Fluorescence NONE Inscription(s) IGI LG660446316

Comments: HEARTS & ARROWS As Grown - No indication of post-growth treatment. This Laboratory Grown Diamond was created by High Pressure High Temperature (HPHT) growth process. Type II

PROPORTIONS



Sample Image Used

CLARITY CHARACTERISTICS



KEY TO SYMBOLS

Red symbols indicate internal characteristics. Green symbols indicate external characteristics.

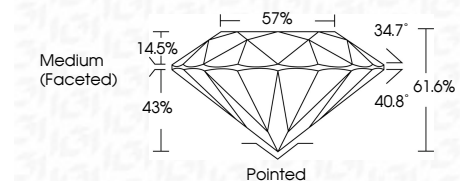


COLOR

D E F G H I J Faint Very Light Light

CLARITY

IF VS 1-2 VS 1-2 SI 1-2 I 1-3 Internally Flawless Very Very Slightly Included Very Slightly Included Slightly Included Included



ADDITIONAL GRADING INFORMATION

Polish EXCELLENT Symmetry EXCELLENT Fluorescence NONE Inscription(s) IGI LG660446316 Comments: HEARTS & ARROWS As Grown - No indication of post-growth treatment. This Laboratory Grown Diamond was created by High Pressure High Temperature (HPHT) growth process. Type II



Summary table of diamond details: October 18, 2024, IGI Report No LG660446316, ROUND BRILLIANT, 7.37 - 7.41 X 4.55 MM, 1.53 CARAT, D, IDEAL, 61.6%, 57%, Medium (Faceted), Pointed, EXCELLENT, EXCELLENT, NONE, IGI LG660446316. Comments: HEARTS & ARROWS As Grown - No indication of post-growth treatment. This Laboratory Grown Diamond was created by High Pressure High Temperature (HPHT) growth process. Type II