



ELECTRONIC COPY

LG660455310
Report verification at igi.org



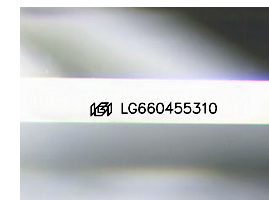
October 19, 2024
IGI Report Number **LG660455310**
Description **LABORATORY GROWN DIAMOND**

Shape and Cutting Style **CUT CORNERED
RECTANGULAR MODIFIED
BRILLIANT**

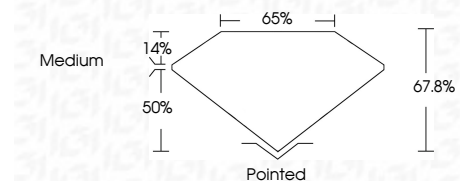
Measurements **11.19 X 7.85 X 5.32 MM**

GRADING RESULTS

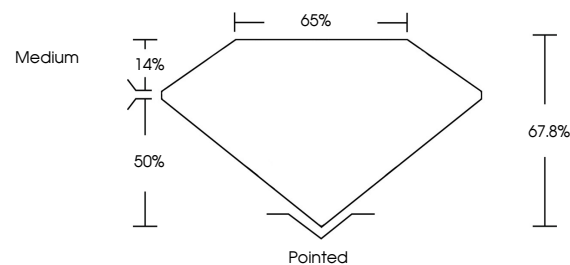
Carat Weight **4.06 CARATS**
Color Grade **E**
Clarity Grade **VVS 2**



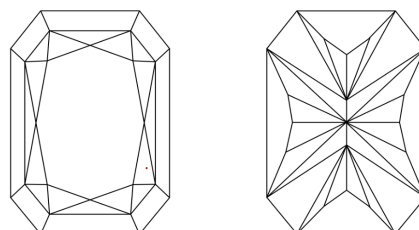
Sample Image Used



PROPORTIONS



CLARITY CHARACTERISTICS



KEY TO SYMBOLS

Red symbols indicate internal characteristics.
Green symbols indicate external characteristics.

COLOR

D E F G H I J Faint Very Light Light

CLARITY

IF	VS ¹⁻²	VS ¹⁻²	SI ¹⁻²	I ¹⁻³
Internally Flawless	Very Very Slightly Included	Very Slightly Included	Slightly Included	Included

ADDITIONAL GRADING INFORMATION

Polish **EXCELLENT**
Symmetry **EXCELLENT**
Fluorescence **NONE**
Inscription(s) **(IGI) LG660455310**

Comments: This Laboratory Grown Diamond was created by Chemical Vapor Deposition (CVD) growth process. Type IIa



IGI



October 19, 2024
IGI Report No LG660455310
CUT CORNERED RECT. MODIFIED BRILLIANT
4.06 CARATS
E
VVS 2
67.8%
65%
Medium
Pointed
EXCELLENT
EXCELLENT
NONE
(IGI) LG660455310
Comments: This Laboratory Grown Diamond was created by Chemical Vapor Deposition (CVD) growth process. Type IIa